

Platts Market Data

User guide

June 2021
Release 5.5v1



Contents

1 Introduction

Contents

Contents	2
1 Introduction	4
1.1 Platts Market Data/Delivery	4
2 Market Data delivery schedules	6
2.1 Market Data schedules general information	6
2.2 General Market Data file notes	6
Market Data Cut Time file is	7
2.3 Market Data sFTP notes	8
2.4 Market Data .csv notes	8
2.5 'Flow Date' and future-dated values, and the 12:45am cut	9
3. Accessing Platts Market Data	10
3.1 Platts Market Data via sFTP	10
3.2 Platts Market Data Segregated by Commodity packages.....	10
3.3 Platts Market Data Segregated by Market Data Category under today folder	13
3.4 Platts Market Data .csv files via www.spglobal.com/platts	17
4 Market Data FTP data file formats	20
4.1 Introduction	20
4.2 Header records	20
4.3 'N' (New) entries	21
4.4 'F' (Future-dated) entries	21
4.5 'C' (Change or Correction) entries.....	22
4.6 'D' (Delete) entries	22
4.7 'X' (No Published Value) entries	22
4.8 Transaction entries in postclose files	23
4.9 Bates in Market Data FTP files	23
5 Market Data .csv value file formats	24
5.1 Introduction	24
5.2 Header records	24
5.3 Data records.....	24
6 Market Data symbol list and value-historyfile formats	26
6.1 Introduction	26
6.2 Symbol list files.....	26
6.2.1 Market Data FTP symbol list files	26
6.2.2 Market Data .csv symbol list files	27
6.3 Symbol directories on www.spglobal.com/platts	29
6.4 Symbol cross-references for selected Platts print/alert services	30
7 Market Data history files	33
7.1 Market Data history files	33
7.1.1 Market Data FTP history files	33
7.1.2 Market Data .csv history files	34
A Appendix A – bate, frequency, currencyand unit of measure codes	35

A.1	Bate codes.....	35
A.2	Assessment frequency codes	35
A.3	Currency codes.....	36
B	Appendix B – M2M Market Data categories.....	38
	B.1 Introduction	38
	MDC Code MDC Description	38

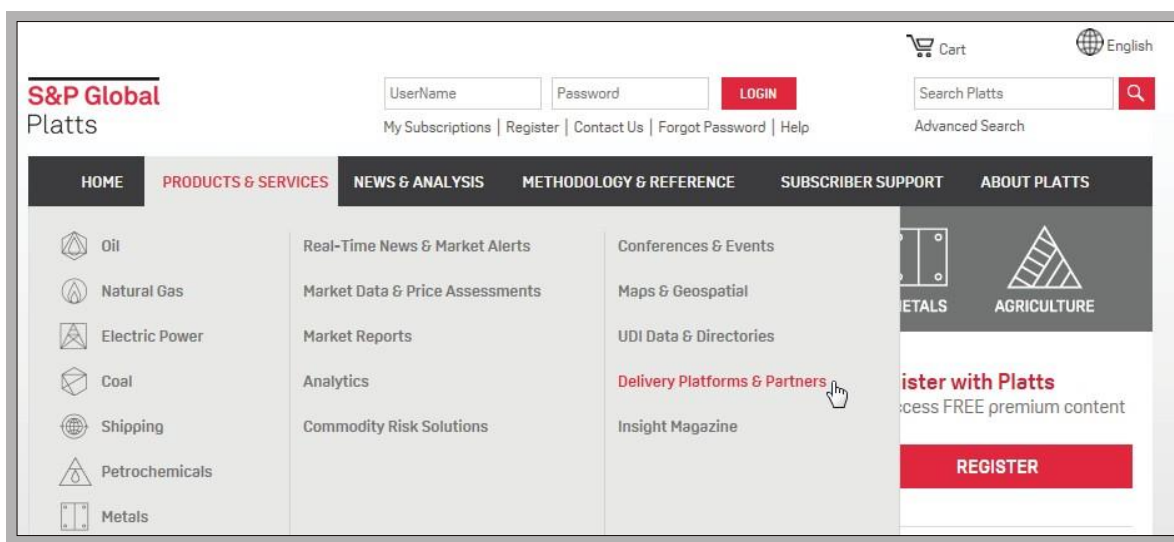
1 Introduction

1.1 Platts Market Data/Delivery

In addition to the prices published in print and online news/alert services, S&P Global Commodity Insights provides two services for delivering market data to subscribers:

- The database access option for real-time news services such as Platts Global Alert.
- Platts Market Data, which enables subscribers to retrieve market price data files, updated several times each day, via the internet. This is the User Guide for Platts Market Data.

Subscribers may receive data directly from Platts or via many other information providers serving energy, metals and financial markets. For more information on other sources of Platts data, visit www.spglobal.com/platts and choose 'Delivery Platforms & Partners' from the 'Products & Services' menu:



Platts reporters monitor trading activity in petroleum, natural gas, petrochemicals, power, metals and other markets worldwide. They collect information on market activity and use standard methodologies to prepare price assessments and indexes. Platts also collects price, statistical and other data directly from government agencies, companies, energy traders and exchanges, and other 3rd-party sources. Currently, 75-80,000 price values update on a typical weekday, rising to 120,000+ during monthly peak periods.

Platts identifies market data values by a 7-character symbol, a 1-character 'bate' (value type indicator - high price, low price, closing price, volume, etc.) and an assessment (as-of) date. Prices distributed each day may include current-day or prior-day prices being published for the first time as well as corrections to previously-published prices.

Symbols are grouped into Market Data categories based on their product and/or regional characteristics. Examples include Lubricants (worldwide), US power, European petroleum products, and 150+ others. A market data category is the smallest standard 'package' available to Platts price data subscribers. For a current list of available market data categories, choose 'Symbol Search/Price Symbol & Page Directories' from the 'Methodology & Reference' menu in www.spglobal.com/platts, and then under the 'Symbol Directories' tab see the following 'directions' link: www.spglobal.com/platts

Data is grouped for delivery to real-time data subscribers into packages, sub-packages and add-on packages. Each package consists of one or more market data categories. Examples include 'PGADData', containing petroleum-related categories aligned with the Platts Global Alert service, and 'EPADData',

containing European power-related categories aligned with the Platts European Power Alert service. For more information on data packaging, contact your Platts Sales representative.

Real-time data subscribers receive updates at the same time they go into the Platts database. Platts Market Data subscribers receive them by downloading data files from the Platts sFTP site or PMC website; there is a separate file for each data category. These files are refreshed several times each day as markets close around the world. See market Data delivery schedules for more information.

Platts Market Data provides subscribers with two options for receiving Platts assessments and other market data:

- Text files delivered via Platts sFTP site, sftp.platts.com. This service is designed for subscribers and vendor partners who maintain their own databases of Platts data.
- Comma-delimited (.csv) files delivered via the 'Market Data Snapshot' section of www.pmc.platts.com. These files are more suitable for end-users of Platts data who may not have extensive technology support or experience with FTP client software. They are formatted for direct use in desktop applications such as spreadsheets.

Section 2 provides detailed information on Market Data update schedules. Sections 3 and 4 provide complete information on the daily file types and data formats available via each of the two delivery options. Section 5 provides information on Market Data symbol-list files, and other options for locating Platts symbols, as well as format and other information on price history data files.

The appendices to this User Guide provide information on codes used in Market Data files, and special formatting information related to Market Data .csv files for North American Power and Natural Gas data categories as well as Platts M2MS (Mark to Market) service.

2 Market Data delivery schedules

2.1 Market Data schedules general information

Platts Market Data FTP (text) and .csv value files are rebuilt and posted several times every weekday (Monday - Friday, including holidays). Symbol files are updated each weekend. Most 'market data cuts' are timed to coincide with the end of the Platts Editorial day in each of the major trading regions, as follows:

Market Data Cut	Time File is available	Data 'as of time'	Type	File Label
Early Asia	7:45am	7:40am	Regular	ASIA_PM
Asia	10:45am	10:40am	Regular	ASIA
Mid_Day US	3:00pm	2:55pm	Regular	MIDDAY_US
Europe	3:45pm	3:40pm	Regular	EMEA
Early Power/Natgas	5:35pm	5:30pm	Regular	EARLY_PNG
Early M2MS	6.15pm	6.10pm	Regular	N_AMER_PM
Early US	6:45pm	6:40pm	Regular	N_AMER_PM
Final (FTP and CSV)	7:45pm	7:40pm	Regular	FINAL
M2MS Backup #1	8:45pm	8:40pm	Regular	FINAL
Extended Final (CSV only)	10:15pm	10:10pm	n/a	FINAL
Postclose (FTP only)	10:15pm	10:10pm	Postclose	POSTCLOSE
M2MS Backup #2	11:45pm	11:40pm	Regular	FINAL
45-Day History (CSV only)	11:00pm	10:10pm	n/a	FINAL
Early Flow Date	12:45am	12:40am	Postclose	N_AMER_AM
Symbol files (weekly)	9:00pm Sat	12:00am Sat	n/a	n/a

All times in the table above are US Eastern local times. The corresponding GMT (Greenwich Mean Time) or UTC (Universal Time Coordinated) times are four hours later during Daylight Saving time in the US, roughly March-November, and five hours later during US Standard time.

The 'Available' time is the latest time files will normally be posted. Platts does not guarantee availability before the stated 'available' times.

As indicated in the 'Data as-of' column, the value data in each cut reflects all updates to the Platts market value database through 5 minutes before the 'Available' time. E.g. the values in Final cut files, available to subscribers at 7:45pm US Eastern time, reflect updates to the database though 7:40pm.

'Regular' Market Data FTP and .csv value files reflect all updates to the Platts value database between 7:40pm US Eastern time the previous weekday (Monday - Friday) and the as-of time for the cut; e.g. the Europe cut for April 5, 2016 reflects all updates between 7:40pm April 4 and 3:40pm April 5. 'Postclose' FTP files posted at 10:15pm contain only values which updated between 7:40 and 10:10pm on the current day. Also see section 2.3-2.5 regarding future-dated values and the 12:45am Postclose cut.

2.2 General Market Data file notes

Although Platts makes every effort to provide value updates at consistent times, we cannot and do not guarantee the market data cut in which any given value will be delivered to subscribers. Our goal in each cut is to deliver as many values to subscribers as early as possible. If a value update is delayed to ensure accuracy, due to market volatility or for any other reason, it will be delivered as soon as possible in a later cut.

Market Data value files are cumulative and are rebuilt for each cut; they are complete replacements for the files in any earlier cut that day. In particular, if a value is published in a given cut and corrected later that day, files in later cuts will reflect the correction.

Market Data Cut	Time file is available	Data 'as-of' Time	Type	File Label
Mid_Day US	3:00pm	2:55pm	Regular	MIDDAY_US
Early Power/Natgas	5:35pm	5:30pm	Regular	EARLY_PNG
Early M2MS	6.15pm	6.10pm	Regular	N_AMER_PM
M2MS Backup #1	8:45pm	8:40pm	Regular	FINAL
M2MS Backup #2	11:45pm	11:40pm	Regular	FINAL
Early Flow Date	12:45am	12:40am	Postclose	N_AMER_AM

Each market data cut includes updated files for all active data categories except:

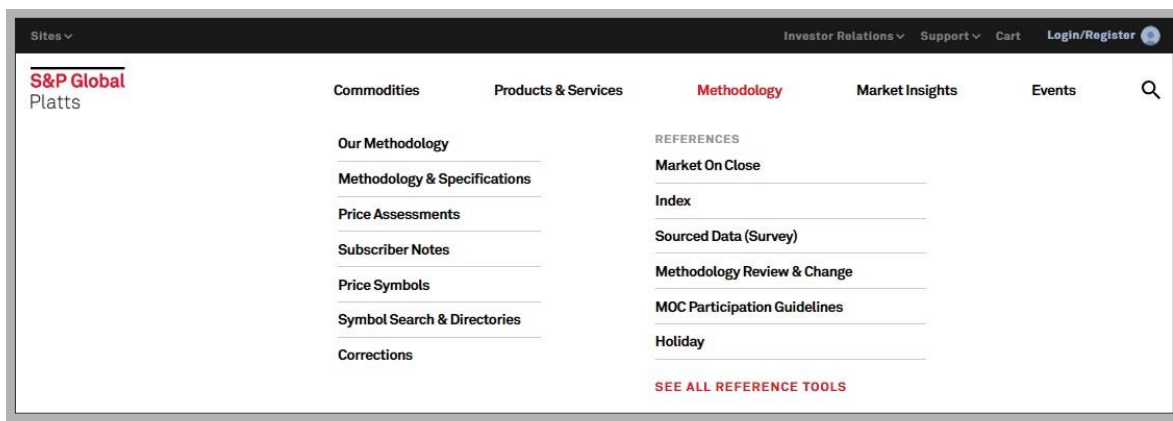
- The 5:35pm 'Early power/natgas' cut includes updates for for 32 market data categories - EB, GM, ADC , EDC, FDC, GDC, JDC, MDC, ODC, PDC, RDC, SDC, UDC, WDC, AMC, EMC, FMC, GMC, JMC, MMC, OMC, PMC, RMC, SMC, UMC, WMC, ADH, JDH,SDH, ODH, WDH, FDH. The first four market data categories correspond to European bulk product assessments, monthly natural gas assessments and daily power and natural gas forward prices, which frequently update shortly after the cutoff for the 3:45pm cut, while the remaining 30 correspond to M2MS, 10 and 20 Year Power and Natural Gas forward curves. This cut is provided to allow subscribers to access this data closer to the time it is first published versus having to wait until 6:45pm for EB and GM categories or 6:15pm or later cuts for 30 M2MS data categories.
- The 6:15pm Early M2MS cut also includes updates for the same 24 M2MS market data categories referenced above. For a detailed description of these categories, please see Appendix B.
- The 8:45 and 11:45pm 'M2MS Backup' cuts include updates for 73 Market Data categories. These cuts provide a backup for the rare occasions when the daily M2MS values prices are not available or updated in time for the 5:35pm Early Power/Natgas, 6:15pm Early M2MS, 6:45pm N_AMER_PM (FTP and CSV) or 7:45pm Final (FTP and CSV) cut.
- The 12:45am 'Early Flow Date' cut includes updates only for categories for which Platts regularly publishes future-dated values. For more information on this cut, see section 2.5, 3.4 and 4.3.

Market Data value files include transaction indicators - new, change, etc. However, the best way to ensure that your database always reflects the latest values from Platts is to follow these two rules:

- If you use files from more than one market data cut, either for a given day or over several days, always process them in order.
- Regardless of any transaction indicator in the file, if you don't have a given value (defined as a symbol/bate/date combination) in your database, add it, and if you already have the value, replace it, or for delete transactions, remove it.

There are two major reasons the most-recently-posted market data files may contain no current-day values:

- Values for today may not have updated yet for that data category. E.g. files for category UG (US Gulf Coast petroleum products) will usually have no current values before the 6:45 or 7:45pm cut, since these values update in late afternoon US time.
- Today is a holiday in the market(s) which include that market data category. Platts announces publishing holidays in advance; for complete information on upcoming Platts publishing holidays, go to www.spglobal.com/platts and select 'Holiday Schedule' from the 'Methodology & Reference' menu:



You may sign up to receive holiday notices several days in advance via email by selecting ‘Email Alerts’ from the ‘Subscriber Services’ menu. Using the same facility, you may also sign up to receive email announcements of new symbols, value corrections, subscriber notes and other useful information.

With one exception, values in market data files reflect ‘real’ values. Occasionally, when Platts deletes a value from its database, the delete entry for it will show -999999 rather than the actual value value which was deleted. -999999 value values in Market Data FTP files should be treated as value deletions, and ignored as data.

2.3 Market Data sFTP notes

In addition to any earlier cuts you may process during the day, Platts strongly recommends that all Market Data subscribers process the Final (7:45pm) cut each day to ensure you receive all new values and corrections for the day. To receive all updates (Nymex/ICE exchange data in particular) for a given day as early as possible, subscribers should process the 10:15pm Postclose in addition to the Final cut.

Files in ‘Regular’ cuts (see ‘Type’ column in the table in section 2.1) update on the sFTP server in two folders simultaneously – the ‘today’ folder and the folder that has its name as the current date. E.g. files in all regular cuts for April 6, 2016 would update in the ‘today’ and ‘20160406’ folders. Final cut files are available for retrieval from the ‘yyyymmdd’ folders on sftp.platts.com for the most recent 45 weekdays.

‘Postclose’ cuts update only in the ‘postclose’ folder at 10:15pm and 12:45am. Postclose files are not archived - each update to a file in this folder overwrites the previous one. However, all values which update in postclose cuts also appear in all regular cuts for the following day.

Postclose files delivered at 10:15pm reflect updates since 7:40pm that day. 12:45am files in the postclose folder reflect updates since 7:40pm the previous weekday; also see section 2.5 for further information about files in this cut.

2.4 Market Data .csv notes

The regular/postclose difference does not apply to Market Data .csv files. The links in the ‘Latest CSV’ column at pmc.platts.com always point to the latest data for that data category or ‘newsletter bundle’. Updates in a given .csv file reflect all symbol and date combinations where one or more values have updated (or been deleted) since 7:40pm the preceding weekday.

With two exceptions, Market Data .csv files reflect the same update transactions as Market Data FTP (text) files for the same cut. The exceptions:

- Market Data .csv files include all values for the symbol/date specified, even if only some of them have updated or been deleted. E.g. if Platts published high/low values for a given symbol yesterday, and then corrects the high value today, today’s .csv file would show both the corrected high and original low values. FTP users would receive only the corrected high value.

- Unlike the 10:15pm postclose FTP files, Market Data .csv files delivered at 10:15pm reflect an 'Extended Final' cut - they contain all the data from the Final cut plus any additional updates which occurred between 7:40pm and 10:10pm that day. Since most subscribers will access these files the following day, this insures that they will include all the transactions for that day; this is especially important for futures exchange values, which always update after 7:40pm US Eastern time.

Because many Market Data .csv subscribers retrieve values for a given day the following morning, and because the 'Latest' files get replaced by Early Asia cut files at 7:45am each morning, a copy of the previous day's 'Extended Final' file is stored as the 'Yesterday' file starting at 7:35am US Eastern time. Values which updated before the previous weekday are available in the 45-day history file.

Market Data .csv 45-day history files are updated once a day in parallel with the 10:15pm (Extended Final) cut. They reflect all update transactions for the most recent 45 days in a single file. Because many of these files are large, they are posted in compressed (.zip) format. After they're uncompressed, they have the same format as 'Latest CSV' files - see Section 4 for details.

2.5 'Flow Date' and future-dated values, and the 12:45am cut

Platts normally produces North American power and natural gas assessments and indexes on the trade date. These values are published under trade date symbols on that date, and normally update in time for Final cut or earlier; descriptions for these symbols include the phrase 'TDt'.

Many subscribers prefer to see these values dated as of the delivery or flow date. To meet their needs, most North American spot power and natural gas values also update under a second set of flow date (FDt) Symbols: the values are the same, but the assessment dates reflect the flow date rather than the trade date. These flow date values are published twice in Platts Market Data files:

- As future-dated values in the same cuts as the corresponding trade date values. For details on formats etc. for future-dated values, see section 4.4.
- As current-day values in the 12:45am and later cuts on the flow date or, for weekend flow dates, the following Monday. These are repeats of the values above for subscribers who choose not to database (or whose systems do not support) future-dated values; see section 4.4.

In addition to North American flow date values, several other types of values may initially appear as future-dated values in Market Data files earlier than the day they're dated. Examples include 'day-ahead' (DA) values for European power/natgas, and some Official Selling Values (OSP's) for crude oil.

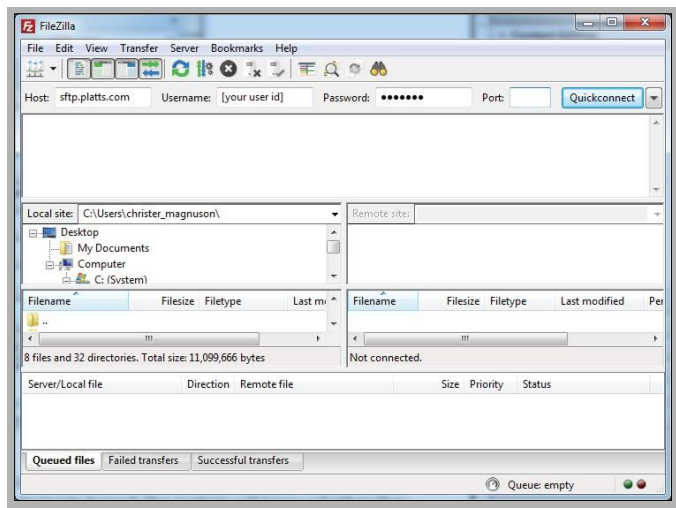
Platts provides updated market data files in the 12:45am cut only for data categories containing symbols which have future-dated values on a regular basis. These categories are:

- EH Natural Gas: European Exch/Other
- EJ Emissions: Global Sulfur/Nitrous Oxides
- ES Electricity: US Assessments + Indexes
- ET Electricity: European Exch/Other
- GD Natural Gas: N American Daily Assmts
- OS Crude Postings: Official Selling Values

3. Accessing Platts Market Data

3.1 Platts Market Data via sFTP

Market Data FTP value data files can be retrieved from the Platts sFTP site using either FTP scripts run from a scheduler, or one of the many available desktop FTP software packages, e.g.:

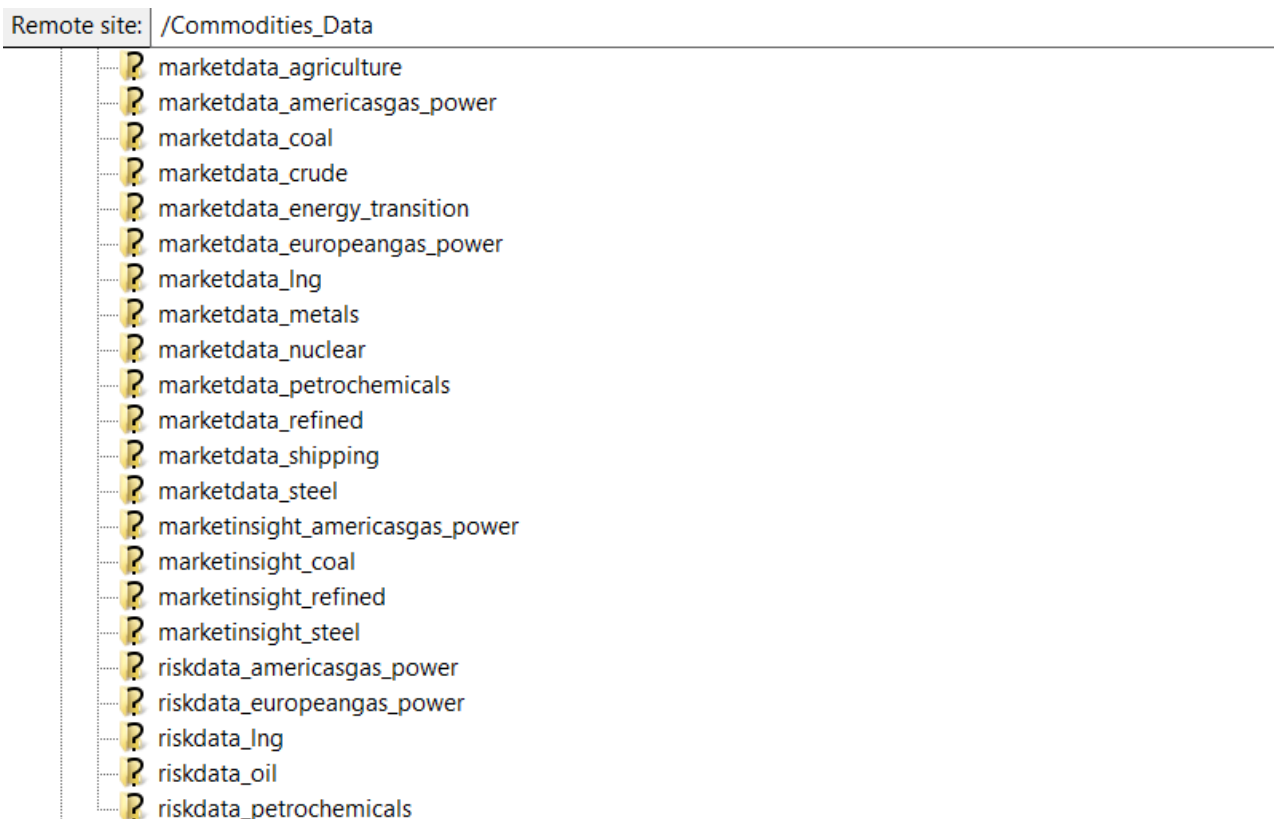


As shown in the illustration above, you must enter your Market Data sFTP user-id and password, which are assigned by Platts, note that both are case-sensitive. The primary site for Platts Market Data service is sftp.platts.com.

Once you have logged in successfully, the system gives below screen based on type of subscription.

3.2 Platts Market Data Segregated by Commodity packages

If you have subscribed for the Commodity packages, you will be able to see the below screen after login:



For example, if you have subscribed for crude market data, all prices will be under the marketdata_crude folder.

Filename	Filesize	Filetype	Last modifi...	Permissi...	Owner/Gr...
..					
20210611		File folder	6/12/2021 ...	drwxr-xr-x	10000 10...
20210614		File folder	6/15/2021 ...	drwxr-xr-x	10000 10...
20210615		File folder	6/16/2021 ...	drwxr-xr-x	10000 10...
postclose		File folder	6/16/2021 ...	drwxr-xr-x	10000 10...
symbols		File folder	6/14/2021 ...	drwxr-xr-x	10000 10...
today		File folder	6/16/2021 ...	drwxr-xr-x	10000 10...

Starting at 7:45am each weekday US Eastern local time, the ‘today’ folder will always contain the most recently-updated data available to Market Data subscribers for the remainder of the Platts editorial day, which ends with the ‘Final’ files posted at 7:45pm. If you miss or need to reprocess any recent market data files, copies of ‘Final’ files for the most recent 45 weekdays are archived in folders with ‘yyyymmdd’ names indicate the date. Value updates are posted to the ‘postclose’ folder at 10:15 pm and 12:45 am. The ‘symbols’ folder provides access to files, updated weekly, containing lists of Platts symbols. Section 2 provides complete information on update schedules for the files in each folder.

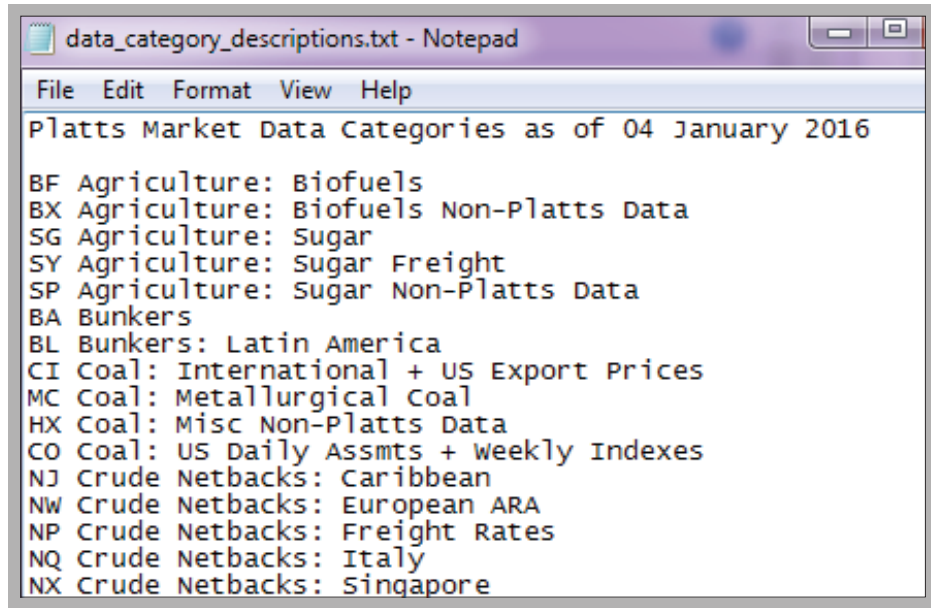
In addition to data files, descriptive information on all the symbols for the selected commodities package is available in symbol folder.

Remote site: /Commodities_Data/marketdata_crude/symbols

Filename	Filesize	Filetype	Last modifi...	Permissi...	Owner/Gr...
..					
csv-version		File folder	6/14/2021 ...	drwxr-xr-x	10000 10...
alp.sym	96	SYM File	6/14/2021 ...	-rw-r--r--	10000 10...
cd.sym	210,808	SYM File	6/14/2021 ...	-rw-r--r--	10000 10...
cf.sym	300,724	SYM File	6/14/2021 ...	-rw-r--r--	10000 10...
cl.sym	18,960	SYM File	6/14/2021 ...	-rw-r--r--	10000 10...
dac.sym	96	SYM File	6/14/2021 ...	-rw-r--r--	10000 10...
drc.sym	96	SYM File	6/14/2021 ...	-rw-r--r--	10000 10...
duc.sym	96	SYM File	6/14/2021 ...	-rw-r--r--	10000 10...
elp.sym	96	SYM File	6/14/2021 ...	-rw-r--r--	10000 10...
fk.sym	33,262	SYM File	6/14/2021 ...	-rw-r--r--	10000 10...
fx.sym	13,086	SYM File	6/14/2021 ...	-rw-r--r--	10000 10...
hd.sym	1,893	SYM File	6/14/2021 ...	-rw-r--r--	10000 10...
io.sym	2,687,941	SYM File	6/14/2021 ...	-rw-r--r--	10000 10...
ji.sym	12,898	SYM File	6/14/2021 ...	-rw-r--r--	10000 10...
lg.sym	15,432	SYM File	6/14/2021 ...	-rw-r--r--	10000 10...

This folder contains a text file with a .sym extension for each active market data category, including ones you may not subscribe to. Similar to value files, each .sym file contains descriptive information for all symbols under the selected commodities package.

In addition to .sym files for each market data category, a separate file in the same folder - data_category_descriptions.sym - provides a complete list of all active market data categories:



The csv-version folder also contains a separate file, data_category_descriptions.csv, having a master list of all market data categories. Here's an illustration of that file when opened in a spreadsheet application:

A	B	C	D	E
Platts Market Data Categories as of 10 June 2016				
BF	Agriculture: Biofuels			
BX	Agriculture: Biofuels Non-Platts Data			
SG	Agriculture: Sugar			
SY	Agriculture: Sugar Freight			
SP	Agriculture: Sugar Non-Platts Data			
BA	Bunkers			
BL	Bunkers: Latin America			
CI	Coal: International + US Export Prices			
MC	Coal: Metallurgical Coal			
HX	Coal: Misc Non-Platts Data			
CO	Coal: US Daily Assmts + Weekly Indexes			
NJ	Crude Netbacks: Caribbean			
NW	Crude Netbacks: European ARA			

Depending on your requirements, Platts Market Data and symbol files can be downloaded individually, or scripts can be set up using the FTP 'mget' command to retrieve all available files.

3.3 Platts Market Data Segregated by Market Data Category under today folder

If your subscription is based on market data category, then after login, you will see the screen below.

The screenshot shows a file explorer interface. On the left, a directory tree lists folders: 20210615, 20210616, 20214327, Commodities_Data, customdata, eWindow_Market_Data, IMPLIED_VOLATILITY, postclose, Power_Index, PRS, symbols, today (highlighted), US_Customs, 20210604, 20210605, and 20210607. The main pane displays a table of files:

filename	Filesize	Filetype	Last modifi...	Permissi...	Owner/Gr...
..					
aa.ftp	58,867	FTP File	6/16/2021 ...	-rw-r--r--	10000 10...
ac.ftp	1,685	FTP File	6/16/2021 ...	-rw-r--r--	10000 10...
ad.ftp	85	FTP File	6/16/2021 ...	-rw-r--r--	10000 10...
adc.ftp	85	FTP File	6/16/2021 ...	-rw-r--r--	10000 10...
adh.ftp	85	FTP File	6/16/2021 ...	-rw-r--r--	10000 10...

Most subscribers access market data files using automated sFTP scripts run at predetermined times by a scheduling system. You may need to obtain assistance from your Technology support group to set up and manage these scripts. Regardless of which approach you decide to use, there may also be other technical issues, such as obtaining access to external sFTP sites through corporate network firewalls. Again, you should contact your local Technology support group for assistance if necessary.

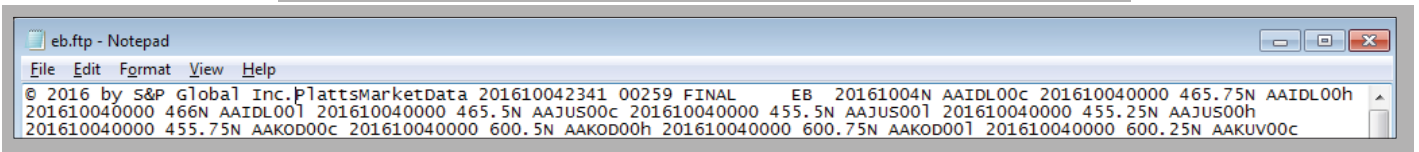
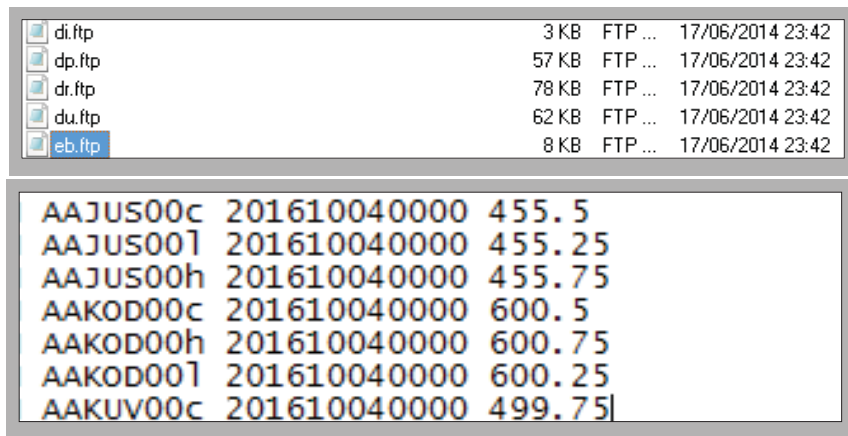
The Platts sFTP site supports ‘secure’ FTP (sFTP). For standard access using a user-id and password, users can set up a sFTP connection directly using their client software. sFTP connections can also be made using an SSH (Secure Shell) key pair; for more information on how to make sFTP connections using SSH key, contact Platts Client Services or email support@platts.com.

Once you have logged into the Platts sFTP site, opening any folder displays all the market data files authorized under your subscription:

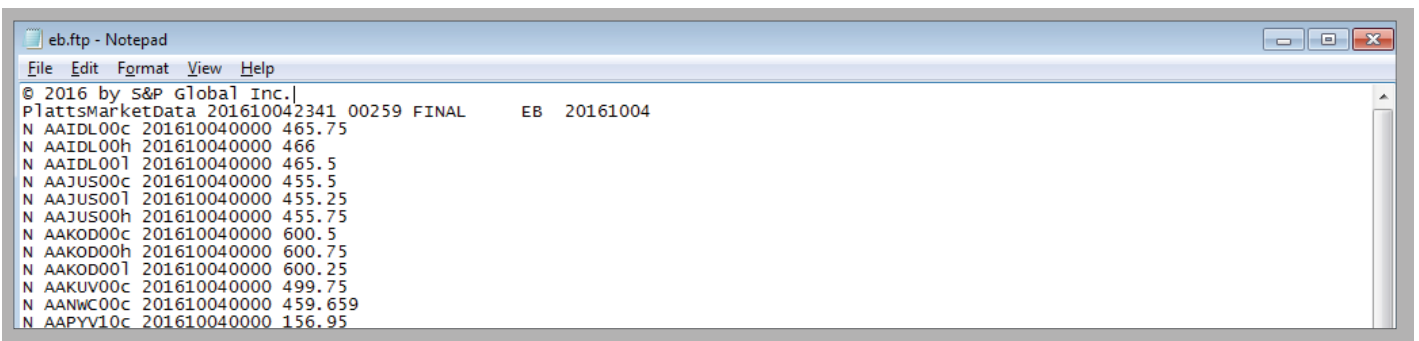
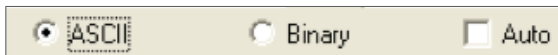
The screenshot shows a file explorer displaying a list of files:

cs.ftp	3 KB	FTP ...	17/06/2014 23:42
cu.ftp	24 KB	FTP ...	17/06/2014 23:42
cx.ftp	1 KB	FTP ...	17/06/2014 23:42
da.ftp	48 KB	FTP ...	17/06/2014 23:42
dc.ftp	2 KB	FTP ...	17/06/2014 23:42
di.ftp	3 KB	FTP ...	17/06/2014 23:42
dp.ftp	57 KB	FTP ...	17/06/2014 23:42
dr.ftp	78 KB	FTP ...	17/06/2014 23:42
du.ftp	62 KB	FTP ...	17/06/2014 23:42
eb.ftp	8 KB	FTP ...	17/06/2014 23:42
edc.ftp	55 KB	FTP ...	18/06/2014 03:42
ee.ftp	20 KB	FTP ...	17/06/2014 23:42
eg.ftp	27 KB	FTP ...	17/06/2014 23:42

Each file contains all the value updates so far today for the symbols in that data category:



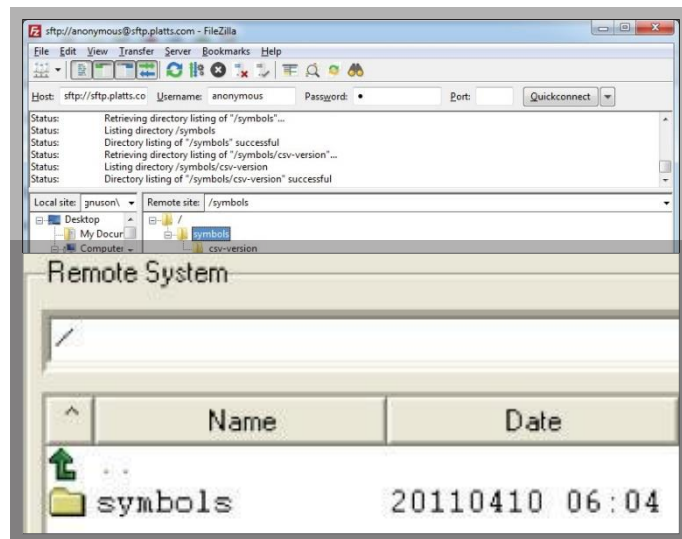
If the contents of an FTP market data file appear garbled...



you may need to select the ASCII option in your FTP client software to adjust the format as you download it:

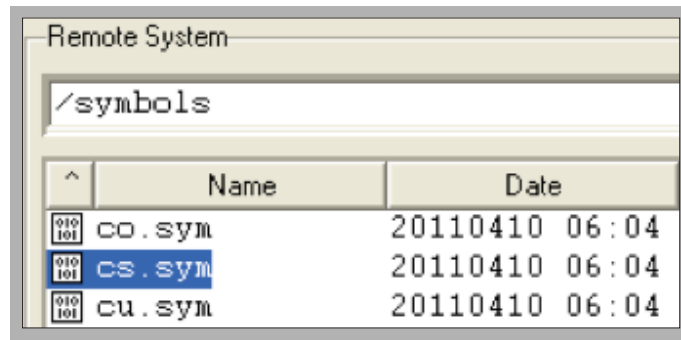
In addition to data files, descriptive information on all the symbols in every market data category can also be retrieved from sftp.platts.com. There are two ways to obtain this information, in the form of symbol list files, updated each weekend, for all data categories:

- Log in using your subscriber user-id and choose the 'symbols' folder as described above or
- Log into the Platts sFTP site anonymously



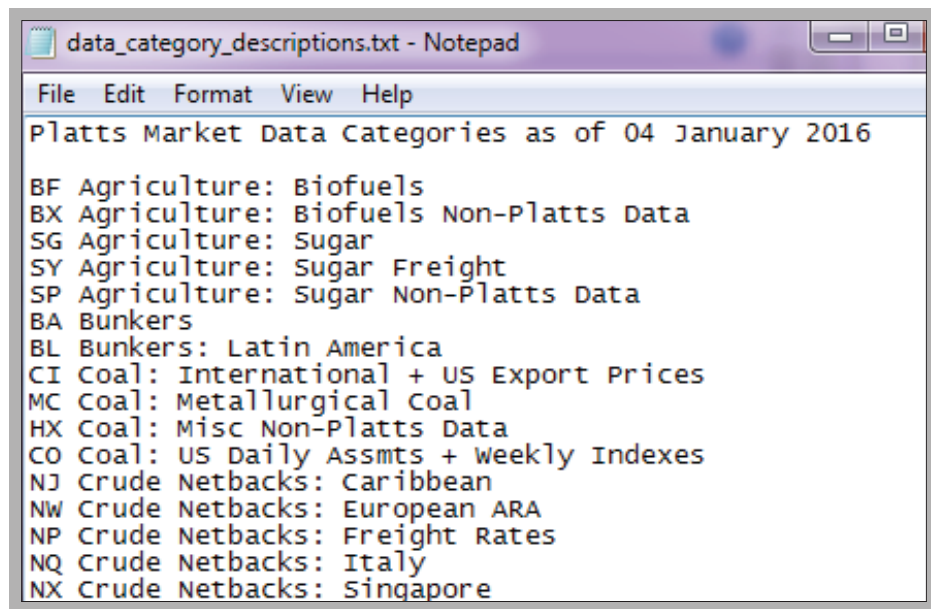
Either approach brings you to the root folder where the symbols folder is located:

This folder contains a text file with a .sym extension for each active market data category, including ones you may not subscribe to. Similar to value files, each .sym files contains descriptive information for all the symbols in that data category.



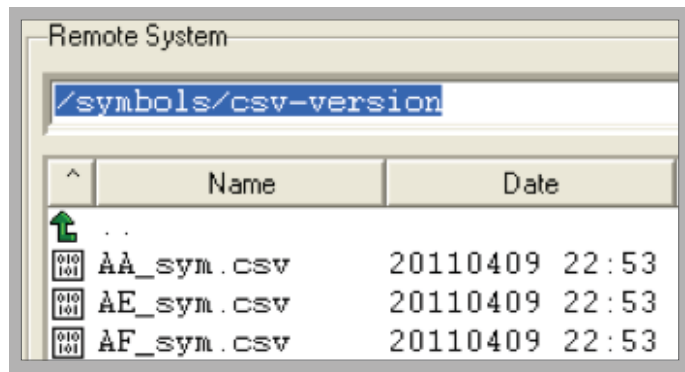
	A	B	C	D	E	F	G	H	I	J	K	L	M	N	O	P	Q	R	S	T
1													10/01/2016	© 2016 by S&P Global Inc.						
2	MDC	Trans	Symbol	Bates	Freq	Curr	UOM	DEC	Conv	*/	To_UOM	Earliest	Latest	Description						
3	CS		AAFD800	chl	MA	USD	BBL		3	*		08/01/2000	09/01/2016	Jet Kero FOB Spore vs Jet Kero MOPS strip MAvg						
4	CS		AALP200	c	MA	USD	MT		3	*		05/01/2003	09/01/2016	Clean Demurrage FOB Spore MAvg						
5	CS		AACZF00	chl	DW	USD	BBL		3	8.5 *	MT	09/01/1999	09/30/2016	Gasoline Unl 92 C+F Australia Cargo						
6	CS		POABC00	chl	DW	USD	BBL		3	7.45 *	MT	07/12/1983	09/30/2016	Gasoil FOB Spore Cargo						
7	CS		AAPJ200	chl	DW	USD	BBL		3	7.9 *	MT	01/03/2005	09/30/2016	Jet Kero MOPS strip						
8	CS		AAPJ203	chl	MA	USD	BBL		3	7.9 *	MT	01/01/2005	09/01/2016	Jet Kero MOPS strip MAvg						
9	CS		AAXNB03	chl	MA	USD	MT		3	7.45 /	BBL	10/01/2011	09/01/2016	Gasoil .25% (2500ppm) FOB Spore Cargo \$/MT MAvg						
10	CS		AACZG00	chl	MA	USD	BBL		3	8.5 *	MT	09/01/1999	09/01/2016	Gasoline Unl 95 C+F Australia Cargo MAvg						

In addition to .sym files for each market data category, a separate file in the same folder - data_category_descriptions.sym - provides a complete list of all active market data categories:



> See 6.2.1 for more information on text-format symbol files.

The /symbols/csv-version folder on sftp.platts.com contains another set of symbol files in comma-delimited (.csv) format:



> See 6.2.2 for more information on .csv-format symbol list files.

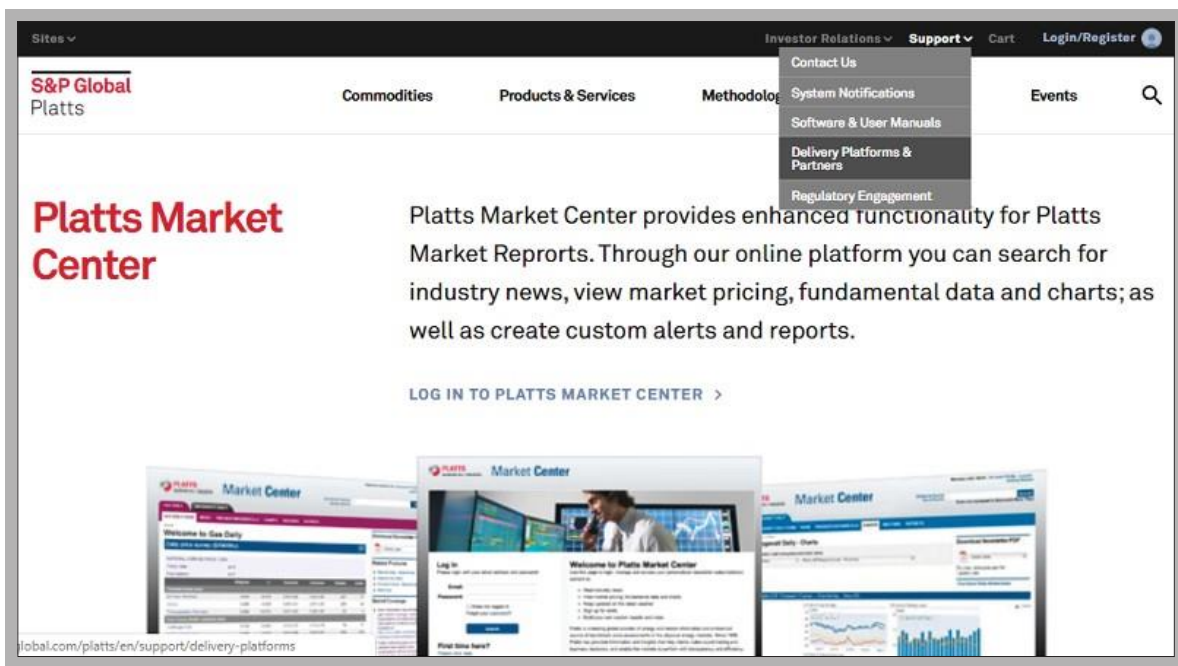
The csv-version folder also contains a separate file, data_category_descriptions.csv, containing a master list of all market data categories. Here's an illustration of that file when opened in a spreadsheet application:

A	B	C	D	E
Platts Market Data Categories as of 10 June 2016				
BF	Agriculture: Biofuels			
BX	Agriculture: Biofuels Non-Platts Data			
SG	Agriculture: Sugar			
SY	Agriculture: Sugar Freight			
SP	Agriculture: Sugar Non-Platts Data			
BA	Bunkers			
BL	Bunkers: Latin America			
CI	Coal: International + US Export Prices			
MC	Coal: Metallurgical Coal			
HX	Coal: Misc Non-Platts Data			
CO	Coal: US Daily Assmts + Weekly Indexes			
NJ	Crude Netbacks: Caribbean			
NW	Crude Netbacks: European ARA			

Depending on your requirements, Platts Market Data and symbol files can be downloaded individually or scripts can be set up using the FTP 'mget' command to retrieve all available files.

> Sections 3 and 5 provide complete information on the format and content of market data value and symbol files, respectively.

3.4 Platts Market Data .csv files via www.spglobal.com/platts



The Platts Market Data .csv service allows end-users of Platts assessments and other market value data to import the data directly into desktop applications such as spreadsheets. The market data .csv files can be reached either via the 'Delivery Platforms & Partners' link at www.spglobal.com/platts after you have logged into the site...

...or directly at www.pmc.platts.com:



Like Market Data FTP, Market Data .csv requires a user-id and password, which are assigned by Platts.

After you have successfully logged in, select 'Market Data Snapshot' under the 'More Products' menu if not already the default view:

As you scroll down, you will see the list of subscribed Market Data .csv value data files over different time periods and the symbols included in each Market Data category:

Product Group	Market Data Category	Description	Symbols	Latest	Yesterday	45 Days
Agriculture	BF	Agriculture: Biofuels	[icon]	[icon]	[icon]	[icon]
Agriculture	BX	Agriculture: Biofuels Non-Platts Data	[icon]	[icon]	[icon]	[icon]
Agriculture	GRC	Agriculture: Grains Corn	[icon]	[icon]	[icon]	[icon]
Agriculture	GRW	Agriculture: Grains Wheat	[icon]	[icon]	[icon]	[icon]
Agriculture	GRV	Agriculture: Grains Dry Bulk	[icon]	[icon]	[icon]	[icon]
Agriculture	SG	Agriculture: Sugar	[icon]	[icon]	[icon]	[icon]
Agriculture	SP	Agriculture: Sugar Non-Platts Data	[icon]	[icon]	[icon]	[icon]
Agriculture	SY	Agriculture: Sugar Freight	[icon]	[icon]	[icon]	[icon]
Coal	CI	Coal: International + US Export Prices	[icon]	[icon]	[icon]	[icon]
Coal	CO	Coal: US Daily Assmts + Weekly Indexes	[icon]	[icon]	[icon]	[icon]
Coal	CRY	Coal: Dry Bulk Freight	[icon]	[icon]	[icon]	[icon]
Coal	CTA	Coal: Thermal Coal Fundamental Data	[icon]	[icon]	[icon]	[icon]
Coal	HX	Coal: Misc Non-Platts Data	[icon]	[icon]	[icon]	[icon]
Coal	MC	Coal: Metallurgical Coal	[icon]	[icon]	[icon]	[icon]
Derivatives	AHC	Derivatives: PIS Asia Houston Crude	[icon]	[icon]	[icon]	[icon]
Derivatives	AHD	Derivatives: PIS Asia Houston Middle Distillates Cracks	[icon]	[icon]	[icon]	[icon]
Derivatives	AHE	Derivatives: PIS Asia Houston Light End Cracks	[icon]	[icon]	[icon]	[icon]
Derivatives	AHF	Derivatives: PIS Asia Houston Fuel Oil	[icon]	[icon]	[icon]	[icon]
Derivatives	AHL	Derivatives: PIS Asia Houston Light Ends	[icon]	[icon]	[icon]	[icon]

Depending on the services associated with your user-id, you may see several types of files:

- The 'Platts Market Data' section contains a separate comma-delimited file for each data category you have subscribed to.
- The 'Latest,' 'Yesterday' and '45-day' files have equivalent contents in both sections. The 'Latest' files are always the most recently updated available versions of the Market Data .csv files. Starting at 7:35am US Eastern time each weekday, 'Yesterday' files contain copies of the final Market Data files from the previous weekday. The '45-day' files contain all value updates for the most recent 45 day period for the data category or 'Newsletter bundle' in the 'Latest CSV' column. The file is in the same .csv format as the 'Latest' and 'Yesterday' files, but is posted in compressed (.zip) format, since some of these files can be rather large.

Trans	Symbol	Description	Currency	UOM	Date	Low(l)	High(h)	Close(c)	Index(u)	Prev Vol(v)	Volume(v)	Bid(b)
CH	AASFD00	Toluene TDI	FUSD	MT	06/09/2016	10	31	21				
CH	AASFF00	Toluene TDI	FUSD	MT	06/09/2016	54	18	43				

The 'Symbols' files, which are updated each weekend, provide complete descriptive information for the symbols in the corresponding value files.

> See Section 2 for complete information on update schedules for all Market Data files.

To view the contents of any Market Data value or symbol file, just double-click on it:

In this example, the .csv file format has been associated with a spreadsheet software package, so the file opens directly in that application:

	A	B	C	D	E	F	G	H	I	J	K	L	M	N	O
1	CS	ASIA	07/10/2016	#####	© 2016 by S&P Global Inc.										
2	Trans	Symbol	Description	Currency	UOM	Date	Low(l)	High(h)	Close(c)	Index(u)	Prev Vol(v)	Volume(v)	Bid(b)	Ask(a)	Open(o)
3	N	AACQI00	Gasoil .25%S (2500ppm) FOB Spore C	USD	BBL	07/10/2016	-0.51	-0.47	-0.49						
4	N	AACUE00	Gasoil .25%S (2500ppm) FOB Spore C	USD	BBL	07/10/2016	61.29	61.33	61.31						
5	N	AACZF00	Gasoline Unl 92 C+F Australia Cargo	USD	BBL	07/10/2016	63.03	63.07	63.05						
6	N	AACZH00	Gasoline Unl 95 C+F Australia Cargo	USD	BBL	07/10/2016	65.4	65.44	65.42						
7	N	AAFEX00	Gasoil .05%S (500ppm) FOB Spore C	USD	BBL	07/10/2016	61.5	61.54	61.52						
8	N	AAFFB00	Gasoil .05%S (500ppm) FOB Spore C	USD	BBL	07/10/2016	-0.3	-0.26	-0.28						
9	N	AAFY00	Jet Kero C+F Australia Cargo	USD	BBL	07/10/2016	65.22	65.26	65.24						

Once the file is open, all the facilities of the application are immediately available to work with the contents of the file. For example, to sort the file by symbol description, you might choose ‘Sort’ from the ‘Data’ command on the toolbar, and select column C:

	A	B	C	D	E	F	G	H	I	J	K	L	M	N	O
1	AE	ASIA_PM	07/09/2016	#####	© 2016 by S&P Global Inc.										
2	Trans	Symbol	Description	Currency	UOM	Date	Low(l)	High(h)	Close(c)	Index(u)	Prev Vol(v)	Volume(v)	Bid(b)	Ask(a)	Open(o)
3	CH	AASFD00	Toluene TDI F	USD	MT	06/09/2016	10	31	21						
4	CH	AASFF00	Toluene TDI F	USD	MT	06/09/2016	54	18	43						

The result:

Symbol files (the links under the ‘Symbols’ column on the website) are equally easy to work with at your desktop; double-clicking on the symbol file for data category CS displays:

- > Section 4 provides complete information on the content and format of daily Market Data .csv value files
- > Section 5 provides the same information for symbol and other Market Data .csv data files.

In addition to the individual symbol files for the market data categories available to you on the Platts website, symbol files for all data categories, including ones you don’t subscribe to, are available via anonymous login from the Platts sFTP site. See section 3.1 for more information on obtaining symbol files from sftp.platts.com.

4 Market Data FTP data file formats

4.1 Introduction

Platts Market Data FTP (text) files consist of a 2-line header followed by individual data records for each value added, changed or deleted in the Platts database during the period covered by a given market data cut – see section 2.1 for details on cut times, etc.

Data records consist of a transaction code followed by the 7-character symbol, the ‘bate’ (value type), the assessment date, a value value and, for corrections and deletions, a transaction timestamp (GMT). Assessment and transaction dates are in `yyyymmddhhmm` format, with `hh` in 24-hour or international style - e.g. 2am displays as 02, 2pm as 14. Values are left justified. FTP files may contain ‘N’ (New), ‘F’ (Future-dated), ‘C’ (Change), ‘D’ (Delete) and ‘X’ (no value today) entries as described below.

Market Data FTP files are space-delimited text files with `.ftp` extensions.

As indicated above and described in detail below, Market Data files include transaction indicators - new, change, etc. However, the best way to insure that your database always reflects the latest values from Platts is to follow these two rules:

- If you use files from more than one Market Data cut each day or from successive days, always process them in order
- Regardless of any transaction indicator in the file, if you don’t have a given value (symbol/bate/ date combination) in your database, add it, and if you already have the value, replace it, or for delete transactions, remove it.

As stored on the Platts sFTP server, lines in Market Data FTP files end with a linefeed (or UNIX newline) character. Platts recommends that subscribers download `.ftp` files using the ‘ASCII’ option in their FTP client software. If necessary, this option will automatically convert the newline to the carriage return/linefeed combination used in text files on most non-unix systems.

4.2 Header records

The first line of the file contains a standard copyright notice, as follows:

© 2016 by S&P Global Inc.

The second line contains a file identifier, the date and time the file was created (GMT), a record count, a file label, the 2- or 3-character data category code, and the as-of date for the file. The following samples show how the second header line appears for each sFTP cut:

The record count indicates the number of data records in the file, not including the 2-line header. It is possible that many Market Data FTP files will contain no data entries, especially for postclose. When this occurs, files will contain only the 2-line header, and a record count of 00000.

PlattsMarketData	201104090021	00112	N_AMER_AM	CS	20110408
PlattsMarketData	201104090021	00112	ASIA_PM	CS	20110408
PlattsMarketData	201104090021	00112	ASIA	CS	20110408
PlattsMarketData	201104090021	00112	EMEA	CS	20110408
PlattsMarketData	201104090021	00112	EARLY_PNG	CS	20110408

PlattsMarketData	201104090021	00112	N_AMER_PM	CS	20110408
PlattsMarketData	201104090021	00112	FINAL	CS	20110408
PlattsMarketData	201104090021	00112	P OSTCLOSE	CS	20110408

4.3 'N' (New) entries

FTP files contain N entries for value values published for the first time today. They consist of a transaction code (N), the symbol and bate, the assessment date and the value (left-justified):

```
N      AABCZ00u      201104080000      19.7
```

They may be values dated today, or prior-days (e.g. postings, monthly averages) published for the first time today. N entries will reflect the value in the database as of the cutoff time for the market data cut - see section 2.1 for cutoff times.

If a value (current-day or delayed prior-day) is entered into the database for the first time today and then corrected before the cutoff time, the current (as of the cutoff time) value will still be published as a single N record. Although very rare, it is therefore possible to have an N entry in a given FTP file and an N entry for the same symbol/bate/date with a different value in a file from a later cut the same day. The value from the later cut is always the one to use.

4.4 'F' (Future-dated) entries

Most values in Market Data FTP files have assessment dates of today (the file as-of date from the end of the 2nd header line) or earlier. However, Platts databases some values with assessment dates in the future; examples include 'flow date' power and natural gas values, and some OSP's (Official Selling Values) for crude oil. For more information on flow date and future-dated values, also see section 2.5.

Future-dated values appear in .ftp files as 'F' entries, to identify them as future-dated. Except for the transaction type, F records have the same format as N entries:

```
PlattsMarketData 2011004080015 03264 FINAL   DC 20110407
:
F IGBXX21u 201104110000 123.45
```

In this example, a value dated April 11, 2016 is published in the .ftp file for April 7; because the assessment date is later than the file date, the transaction indicator is set to 'F'.

To complete the example, this value appears again in the .ftp file published on the assessment date for data category DC:

```
PlattsMarketData 201104120017 03345 FINAL   DC 20110411
:
N IGBXX21u 201104110000 123.45
```

Note that if this value had been entered on April 7 and then corrected on April 8, the initial value would appear as an F entry in the market data files for April 7, and the corrected value would appear (also as an F entry, since it's still future-dated) in the files for April 8 in all cuts after the correction was made. The corrected value would also appear in the final N entry published on April 11.

4.5 'C' (Change or Correction) entries

Market Data FTP files contain C entries only for values dated and published before today, and changed today:

```
C WEABF20I 201104070000 16.8 201104081621
```

The values in C Entries will always reflect the current value in the Platts database as of the cutoff (as-of) time for the market data cut. The update timestamp shows the time (GMT) the value was changed in the Platts database. If there were multiple changes before the cutoff time, the file will contain a single C entry with the value and timestamp from the latest one.

If a value is corrected more than once in a day, the C entry for it will always reflect the last correction. This means that it's possible (although rare) for a C entry in one .ftp file for a given symbol/bate/date to have a different value than one in an earlier file the same day. To insure you always have the most current value, you should always process Market Data FTP files in order.

Note that C entries are not published for future-dated values - see section 2.5.

4.6 'D' (Delete) entries

Market Data FTP files will contain D entries only for values deleted today:

```
D ABCDE00h 201104070000 25.4 201104081840
```

The timestamp will reflect when the delete was processed in the Platts database; the value will show the value deleted. If there are multiple deletes during the day (extremely rare), the timestamp and value will reflect the last one. As indicated in section 2.2, -999999 may occasionally appear in 'D' records in place of 'real' values, but the meaning is the same - any existing value for this symbol/bate/date combination in your database should be deleted.

Although rare, it is possible for values to be deleted and then reentered into the database. D entries will be published only if there is no value in the database as of the cutoff time for the market data cut. If a value is entered into the database today and then deleted, FTP files will contain a D entry, but no N. If this value was never published in an earlier market data cut (or if you didn't process that cut), you may therefore receive a 'D' entry for a value which isn't in your database.

4.7 'X' (No Published Value) entries

Market Data FTP files will contain X entries for any active symbols in the data category without a current-day value:

```
X WEABA00I 201104110000
```

X entries appear only:

- In regular - not postclose - .ftp files.
- For symbol/bate combinations which are active and which have had at least one value dated within the last 6 months.
- For daily symbols with no value dated today, weekly symbols with no value dated within the past 9 days, and monthly symbols with no value dated within the past 33 days.

Note that X entries contain no values. They are provided only as a way to identify symbols which have not yet updated today. If you do not need to check for missing values, you may safely ignore X entries.

4.8 Transaction entries in postclose files

Postclose files published at 10:15pm will contain only N, F, C and D entries reflecting database update transactions processed between 7:40pm and 10:10pm US Eastern time. Postclose files published at 12:45am will contain values added or changed in the Platts database between 7:40pm the previous weekday and 12:40am today, as well as values dated today which were originally published in prior-day .ftp files as 'F' entries.

Postclose files will normally not contain X entries.

4.9 Bates in Market Data FTP files

Values in Market Data FTP files are identified by the symbol, the bate code and the assessment date. Bate codes identify the value type - high value (h), low value (l), etc. For a complete list of bate codes, see Appendix A, section A.1.

Due to vendor system limitations, values published in market data files with 'u' bates may be delivered to some realtime subscribers with 'c' bates. Because of this, symbols will never have both 'c' and 'u' bates.

Platts currently uses 'w' bate for volumes. By convention, values published by futures exchanges represent trading volumes for the previous trading day. However, Platts publishes these values as current-day volumes so that volumes for a given as-of date correspond to values with the same date, which makes analysis and charting easier.

5 Market Data .csv value file formats

5.1 Introduction

Market Data .csv files provide Platts data in a comma-delimited format designed to enable end-users to view it directly in desktop applications such as spreadsheets. These files contain a 2-line, comma-delimited header followed by one line for each symbol and assessment date combination in the database for which one or more values were added, changed or deleted today. Each line contains all values for that symbol and date, not just those added or changed today.

The file provides columns for all possible value types (bates) a symbol may have; see Appendix A, A.1 for more information on bate code values. The second header line contains column headings for all of them. Any value types which are not applicable for the symbol, which are inactive, or which have no values in the database for that assessment date display as null (' , ') entries in the file.

5.2 Header records

The first line in Market Data .csv files displays the data category, the file label ('FINAL', 'POSTCLOSE', etc), the file as-of date (US Eastern time), the file creation date and time (GMT), and a standard copyright notice:

```
ES,FINAL,2016/01/02,2014/01/03 00:05 GMT," © 2016 by S&P Global Inc.  
" ,,,,,,,,,
```

The second header line contains fixed text column headings for the data lines in the remainder of the file:

```
Trans,Symbol,Description,Curr,UOM,Date,Low(l),High(h),Close(c),  
Index(u),Prev Vol(w),Volume(v),Bid(b),Ask(a),Open(o),  
Prev Opn Int(e),Mean(m)
```

5.3 Data records

Each data line in the file for a given market data cut contains a 'transaction type' indicator, the symbol, symbol description (enclosed in double quotes), currency and unit of measure codes, and the assessment date, followed by the value for every active bate for the specified symbol and date:

```
N,AABCZ00,"North Path 15 OPk TDt",USD,MGW,2016/01/03/,  
19,20.5,,19.7,1300,,,,  
CH,AAMBC00,"Into Southern OPk TDt",USD,MGW,2016/01/03,  
17.5,17.5,,17.5,0,,,,
```

As also illustrated in Section 1, if Market Data .csv files are associated with a desktop application such as a spreadsheet, double-clicking on the link for the file at www.pmc.plattss.com will automatically open the file in that application:

	A	B	C	D	E	F	G	H	I	J	K	L	M	N	O	P	Q
1	AE	ASIA_PM	07/09/2016	07/09/2016 15:54	© 2016 by S&P Global Inc.												
2	Trans	Symbol	Description	Currency	UOM	Date	Low(l)	High(h)	Close(c)	Index(u)	Prev Vol(v)	Volume(v)	Bid(b)	Ask(a)	Open(o)	Prev Opn	Mean(m)
3	CH	AASFD00	Toluene TDI	USD	MT	06/09/2016	10	31	21								
4	CH	AASFF00	Toluene TDI	USD	MT	06/09/2016	54	18	43								

There are four possible values for the transaction indicator in the first column:

- N is used for all records where the assessment date is today, including values which may have been entered earlier today and then corrected.
- NH is used where all values are being published for the first time today, but are dated before today - e.g. postings or monthly averages.
- F is used for entries where the assessment date in column F is greater than the file date in cell C1. Values in this row may have been entered for the first time today, or entered and possibly corrected before today, and corrected today. Note that values published as F entries will be republished as N entries on the day they're dated - see section 2.5 for more information.
- CH marks entries for prior-day values where values for this symbol and date were published before today, and then one or more were added, changed or deleted today.

If values for a symbol and date were published before today, and then all of those values were deleted today, today's file will include a 'CH' entry for that symbol and date with all value columns set to null (',,'). That way, the user will know that the symbol no longer has any values for that date.

The format for the assessment date (yyyy/mm/dd) was chosen for compatibility with major desktop applications while still allowing files to be sorted directly by date. For symbols with assessment dates include times, e.g. intraday indicators and rack values, the date format will be 'yyyy/mm/dd hh:mi', with no comma between the date and time; hh refers to the hour in 'international' format - e.g. 05 for 5am and 17 for 5pm.

6 Market Data symbol list and value-history file formats

6.1 Introduction

In addition to the value files Platts publishes symbol reference data in several files:

- Symbol List files: These files, updated each weekend, include complete descriptive information for the symbols in each data category. The .csv-format symbol files include transaction indicators to highlight symbols added or changed this week. In addition to individual files for each category, ThisWeek_sym.csv provides, in a single file, a complete list of all symbols added, changed or deleted this week across all data categories.
- Symbol Directory Files: these files include complete descriptive information for the symbols grouped by commodity type.

6.2 Symbol list files

Platts publishes symbol list files weekly, on Saturday. There is a separate file for each market data category, plus a separate file listing all active categories. These files are available in either of two formats, as described in the next two sections.

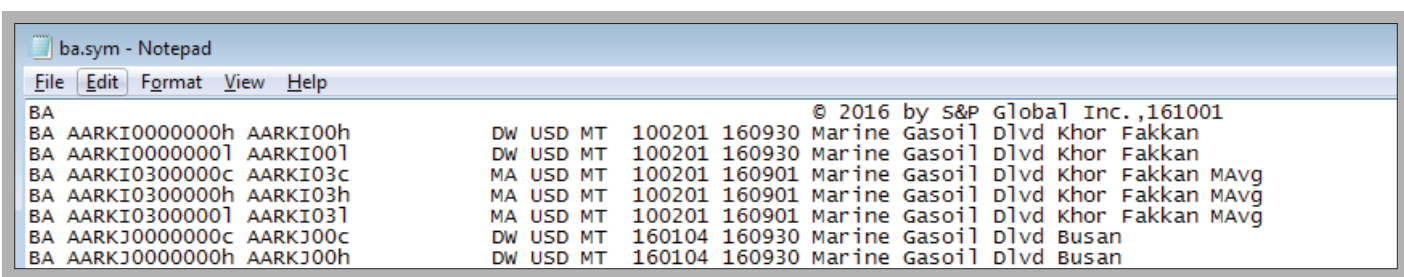
6.2.1 Market Data FTP symbol list files

As illustrated in Section 1, Market Data FTP symbol files are available in the /symbols folder on sftp.platts.

com , either via subscriber user-id's or via anonymous login to the sFTP site. The symbol file for each data category is a fixed-format text file with a .sym extension, and contains:

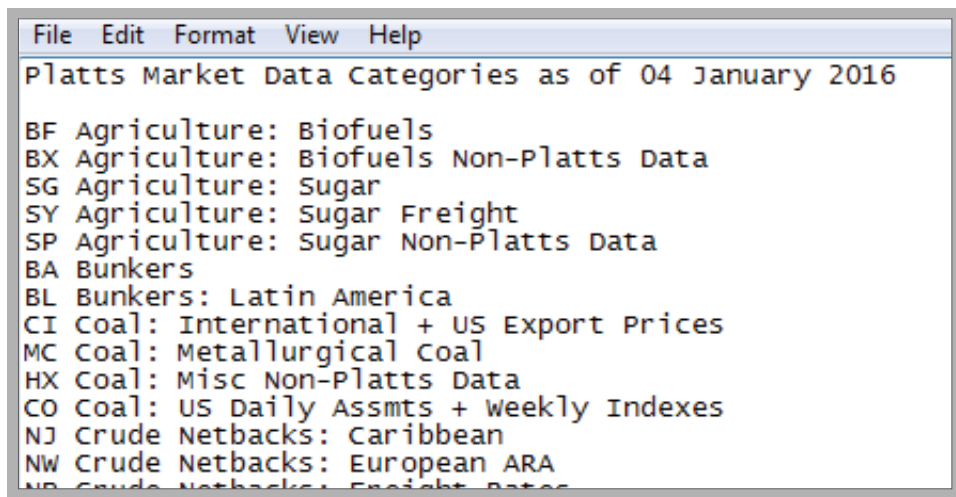
- A one-line header record containing the market data category code, a standard copyright notice, and the as-of date (yymmdd) of the file.
- A separate entry for each active symbol/bate combination in the data category. Each entry includes the data category, 12-character symbol+bate (legacy), 7-character symbol+bate, 9-character symbol (legacy), frequency code, currency code, unit of measure code, dates of the earliest and latest value (yymmdd format) for that symbol+bate, and symbol description. For a complete list of frequency, currency and unit of measure codes which appear in symbol lists, see Appendix A, section A.2 - A.4.

Here is a sample of the symbol list file for data category BA:



```
ba.sym - Notepad
File Edit Format View Help
BA © 2016 by S&P Global Inc.,161001
BA AARKI0000000h AARKI00h DW USD MT 100201 160930 Marine Gasoil D1vd khor Fakkan
BA AARKI0000000l AARKI00l DW USD MT 100201 160930 Marine Gasoil D1vd khor Fakkan
BA AARKI0300000c AARKI03c MA USD MT 100201 160901 Marine Gasoil D1vd khor Fakkan MAVg
BA AARKI0300000h AARKI03h MA USD MT 100201 160901 Marine Gasoil D1vd khor Fakkan MAVg
BA AARKI0300000l AARKI03l MA USD MT 100201 160901 Marine Gasoil D1vd khor Fakkan MAVg
BA AARKJ0000000c AARKJ00c DW USD MT 160104 160930 Marine Gasoil D1vd Busan
BA AARKJ0000000h AARKJ00h DW USD MT 160104 160930 Marine Gasoil D1vd Busan
```


As illustrated in section 1.2, the /symbols folder on the sFTP site also includes a file, data_category_descriptions.sym, which lists all the currently-active market data categories and their descriptions:



```
File Edit Format View Help
Platts Market Data Categories as of 04 January 2016
BF Agriculture: Biofuels
BX Agriculture: Biofuels Non-Platts Data
SG Agriculture: Sugar
SY Agriculture: Sugar Freight
SP Agriculture: Sugar Non-Platts Data
BA Bunkers
BL Bunkers: Latin America
CI Coal: International + US Export Prices
MC Coal: Metallurgical Coal
HX Coal: Misc Non-Platts Data
CO Coal: US Daily Assmts + Weekly Indexes
NJ Crude Netbacks: Caribbean
NW Crude Netbacks: European ARA
UP Crude Netbacks: Freight Rates
```

6.2.2 Market Data .csv symbol list files

As illustrated in Section 1, Market Data .csv symbol files are available:

- To subscribers at www.pmc.plattss.com.
- In the /symbols/csv-version folder at sftp.platts.com for all categories, including ones you may not subscribe to, either via your subscriber user-id or via anonymous login.

There are three major differences between .csv and FTP (text) symbol files:

- Market Data .csv files are comma-delimited, rather than fixed-format, which makes them more compatible with desktop applications such as spreadsheets.
- Each file contains one row per symbol, rather than a separate row for each symbol/bate combination.
- Market Data .csv symbol files contain additional information, such as conversion factors and transaction indicators.

Market Data .csv symbol files contain:

- A 2-line header record consisting of the as-of date for the file and a copyright notice (first line) and column headings for the remaining lines in the file (second line).
- A separate line for each symbol in the data category, consisting of the data category code, an add/change indicator (if applicable), the 7-character symbol, all the active bates for that symbol, the frequency, currency and unit of measure codes for the symbol, the maximum number of decimal places for values, the conversion factor, multiply/divide indicator and “convert to” unit of measure, the earliest and latest values for the symbol (mm/dd/yyyy format), and the symbol description. For a complete list of the currency and other codes used in .csv symbol files, see Appendix A.

```

BA_sym.csv - Notepad
File Edit Format View Help
|,,,,,,,,,10/01/2016,© 2016 by S&P Global Inc.
MDC,Trans,Symbol,Bates,Freq,Curr,UOM,DEC,Conv,*/,To_UOM,Earliest,Latest,Description
BA,,PUAGP03,chl,MA,USD,MT,3,6.35,/,BBL,01/01/2016,09/01/2016,Bunker FO 180 CST Dlvd Busan MAVg
BA,,PUAGU03,chl,MA,USD,MT,3,6.35,/,BBL,01/01/2016,09/01/2016,Bunker FO 380 CST 3.5% Offshore Nigeria MAVg
BA,,AAYJL00,c,DW,USD,MT,3,7.07,/,BBL,,Marine Gasoil Dlvd Lome
BA,,CBDAB00,u,DW,USD,MT,2,*,11/23/2009,09/30/2016,Marine Diesel Kaohsiung/Keelung/Taichung Dlvd CPC Taiwan
BA,,PUAGS03,chl,MA,USD,MT,3,6.35,/,BBL,01/01/2016,09/01/2016,Bunker FO 380 CST Dlvd Colombo MAVg
BA,,AAIAV00,chl,DW,USD,MT,3,6.35,/,BBL,12/03/2001,09/30/2016,Bunker FO 180 CST 3.5% Ex-wharf Vancouver
BA,,AAMNY00,chl,DW,USD,MT,3,6.35,/,BBL,12/15/2003,09/30/2016,Bunker FO 180 CST 3.5% Dlvd Charleston

```

Here is a partial sample of the .csv symbol file for data category BA in its original format ...

	A	B	C	D	E	F	G	H	I	J	K	L	M	N	O	P	Q	R	S
1													10/01/2016	© 2016 by S&P Global Inc.					
2	MDC	Trans	Symbol	Bates	Freq	Curr	UOM	DEC	Conv	*/	To_UOM	Earliest	Latest	Description					
3	BA		PUAGP03	chl	MA	USD	MT		3	6.35 /	BBL	01/01/2016	09/01/2016	Bunker FO 180 CST Dlvd Busan MAVg					
4	BA		PUAGU03	chl	MA	USD	MT		3	6.35 /	BBL	01/01/2016	09/01/2016	Bunker FO 380 CST 3.5% Offshore Nigeria MAVg					
5	BA		AAYJL00	c	DW	USD	MT		3	7.07 /	BBL			Marine Gasoil Dlvd Lome					
6	BA		CBDAB00	u	DW	USD	MT		2	*		11/23/2009	09/30/2016	Marine Diesel Kaohsiung/Keelung/Taichung Dlvd CPC Taiwan					
7	BA		PUAGS03	chl	MA	USD	MT		3	6.35 /	BBL	01/01/2016	09/01/2016	Bunker FO 380 CST Dlvd Colombo MAVg					
8	BA		AAIAV00	chl	DW	USD	MT		3	6.35 /	BBL	12/03/2001	09/30/2016	Bunker FO 180 CST 3.5% Ex-Wharf Vancouver					
9	BA		AAMNY00	chl	DW	USD	MT		3	6.35 /	BBL	12/15/2003	09/30/2016	Bunker FO 180 CST 3.5% Dlvd Charleston					

... and as it appears when imported into a spreadsheet application.

A transaction indicator in the second column marks symbols that have descriptive information or data category changed during the preceding week (Saturday through Friday):

- ‘Add’ indicates that the symbol was added to this data category last week. The symbol may be either totally new, or an existing one moving to this category from another one.
- ‘Chg’ indicates that one or more changes were made to descriptive information for this symbol last week.

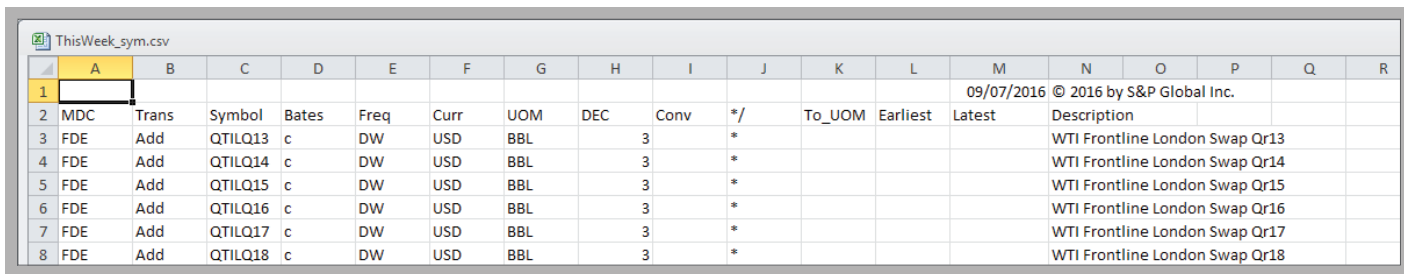
Where applicable, Market Data .csv symbol files provide the information needed to convert values expressed in one unit of measure to another. In the image above for data category BA, the entries in row 10, columns F,G and I-K indicate that values for symbol PUADY00 are expressed in \$US/metric ton; to convert these values to \$US/barrel, the value should be divided by 6.35. Conversion factors are provided only for the most commonly-used volume/weight conversions; arithmetic volume/volume and weight/weight conversion factors (e.g. 42 gallons/barrel) are not included.

The /symbols/csv-version folder on the sFTP site also includes a file, data_category_descriptions.csv, which lists all the currently-active market data categories and their descriptions:

	A	B	C	D	E
1	Platts Market Data Categories as of 04 January 2016				
2					
3	BF	Agriculture: Biofuels			
4	BX	Agriculture: Biofuels Non-Platts Data			
5	SG	Agriculture: Sugar			
6	SY	Agriculture: Sugar Freight			
7	SP	Agriculture: Sugar Non-Platts Data			

6.2.3 “This Week” Symbol Files

As indicated in section 5.2.2, Market Data .csv symbol files for each data category include transaction indicators to mark symbols added or changed during the current week. To make it easier for subscribers to manage these changes to the Platts database, an additional .csv symbol file, ThisWeek_sym.csv, is provided each week. It contains all symbol-related transactions for the preceding week (Saturday through Friday) for all market data categories in a single file. This file has the same format as other Market Data .csv symbol files:



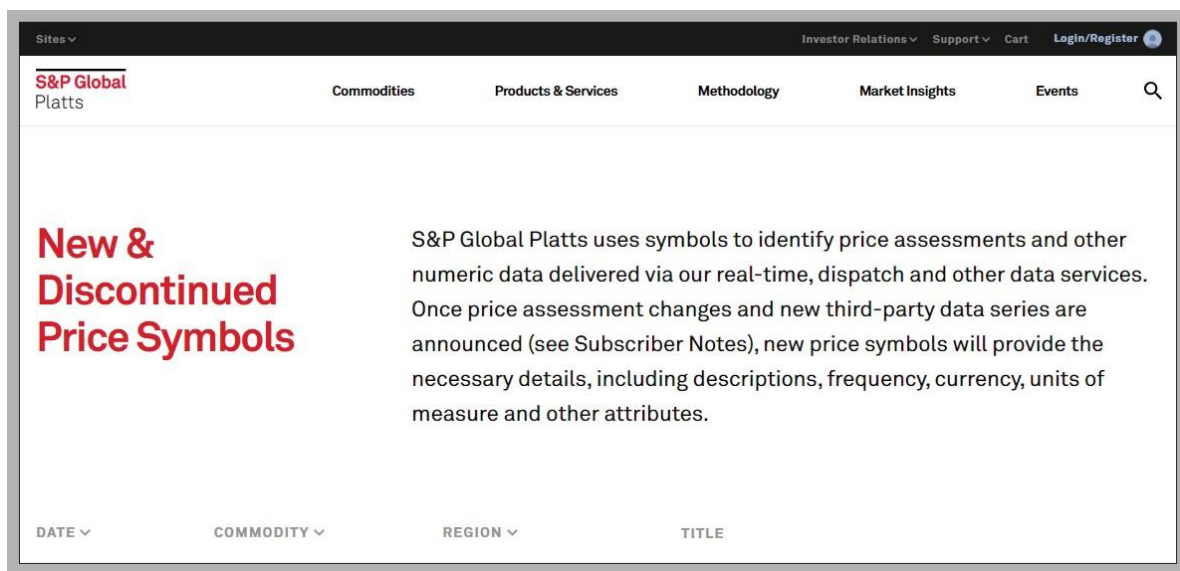
	A	B	C	D	E	F	G	H	I	J	K	L	M	N	O	P	Q	R
1													09/07/2016	© 2016 by S&P Global Inc.				
2	MDC	Trans	Symbol	Bates	Freq	Curr	UOM	DEC	Conv	*/	To_UOM	Earliest	Latest	Description				
3	FDE	Add	QTILQ13	c	DW	USD	BBL	3		*				WTI Frontline London Swap Qr13				
4	FDE	Add	QTILQ14	c	DW	USD	BBL	3		*				WTI Frontline London Swap Qr14				
5	FDE	Add	QTILQ15	c	DW	USD	BBL	3		*				WTI Frontline London Swap Qr15				
6	FDE	Add	QTILQ16	c	DW	USD	BBL	3		*				WTI Frontline London Swap Qr16				
7	FDE	Add	QTILQ17	c	DW	USD	BBL	3		*				WTI Frontline London Swap Qr17				
8	FDE	Add	QTILQ18	c	DW	USD	BBL	3		*				WTI Frontline London Swap Qr18				

As illustrated in section 1.3, ThisWeek_sym.csv is available on sftp.platts.com in the /symbols/csv-version folder, either via your subscriber user-id, or via anonymous login.

The ThisWeek_sym.csv file may include an additional transaction, ‘Del’. When symbols stop updating, they’re normally moved to a ‘discontinued’ data category. When this happens, the ThisWeek_sym.csv file will show a ‘Del’ transaction for the active category and an ‘Add’ transaction for the discontinued category. Also see section 6.3 for further information on discontinued symbols.

6.3 Symbol directories on www.spglobal.com/platts

In addition to the symbol list files described above, which are updated weekly, Platts also publishes symbol directories for registered users at www.spglobal.com/platts. Registration is open to anyone at no charge; for more information or to register, choose ‘Register/Log In’ from the menu illustrated below.



To access these directories, select ‘Symbol Search & Directories’ from the ‘Methodology’ menu ...

Symbol directories are stored in spreadsheet (.xls) form; the format is similar to the .csv symbol list files described in section 5.2.2. These symbol directory spreadsheets are updated bi-monthly.

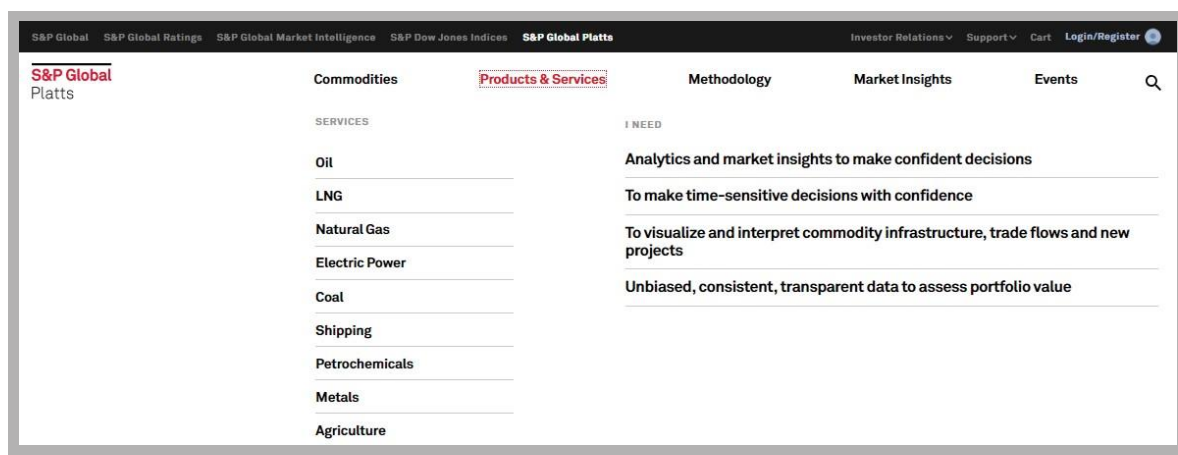
Apart from having symbol information grouped by industry/commodity, rather than in separate files by data category, the symbol directories at www.spglobal.com/platts provide one other set of information which may be useful. These directories are the only place subscribers can obtain direct access to lists of discontinued symbols; e.g. here are the directories for Natural Gas:

Symbol Directories	DIRECTORY	ACTIVE	DISCONTINUED
	Coal	-500 KB	-1 MB
	Agriculture	-500 KB	-200 KB
	Futures	-3 MB	-2 MB
	Metals	-1 MB	-100 KB
	Natural Gas	-6 MB	-3 MB

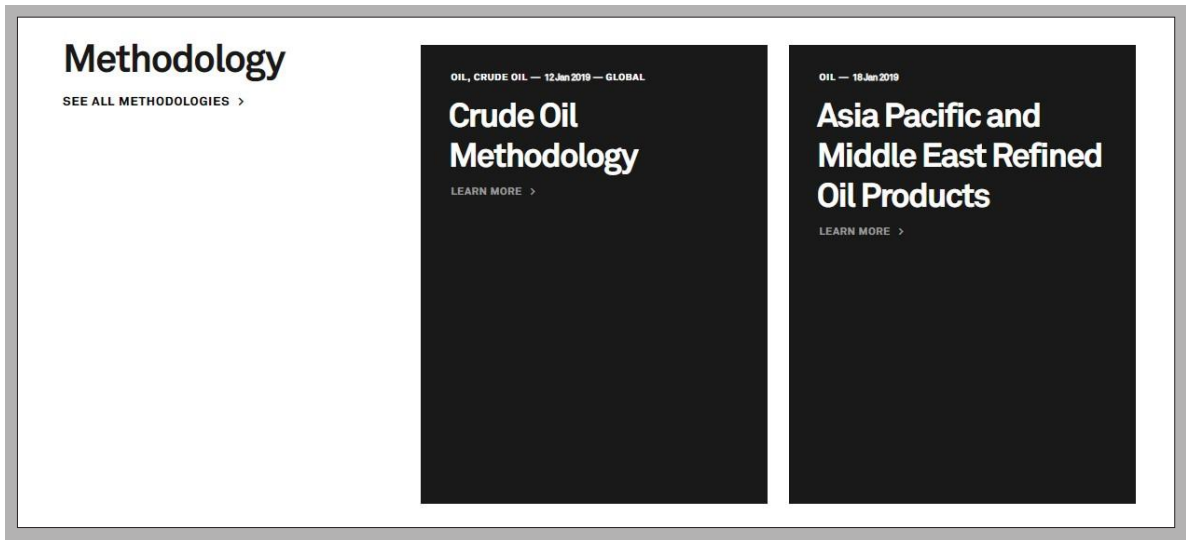
When Platts symbols permanently stop updating for any reason, they are moved to a ‘discontinued’ data category. There are a few legacy discontinued categories - e.g. OZ for some discontinued oil symbols. However, most discontinued symbols are moved to specific categories based on the active category they were originally assigned to - e.g. when a symbol in category BA is discontinued, it is moved to category BAZ. The ThisWeek_sym.csv file (section 5.2.3) will contain ‘Del’ and ‘Add’ entries for categories BA and BAZ, respectively. The next time the directories are updated on www.spglobal.com/platts, these discontinued symbols will move from category BA in the Active Petroleum Assessments directory to category BAZ in the Discontinued directory.

6.4 Symbol cross-references for selected Platts print/alert services

In addition to delivery via Platts Market Data and realtime data services, subscribers may also receive values for the majority of Platts symbols in a wide variety of print and realtime news/alert services. To assist users in relating values in these services back to the underlying symbols, Platts provides annotated versions of many of them at www.spglobal.com/platts. To locate these ‘coded newsletters’, either select the desired commodity from the ‘Products & Services’ menu ...

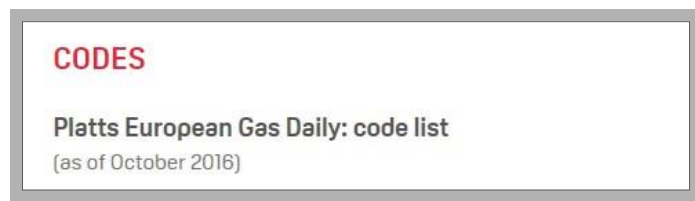


... and then click on



or select the commodity from the 'Methodology' menu

The 'Codes' sections on the commodity methodology pages contain sample copies of many Platts newsletters, etc ...



... but instead of the values, the samples show the symbols whose values appear there:

Platts European Gas Midpoints

	p/th	\$/MMBtu	eur/MWh
UK NBP			
Day-Ahead	NGAAA00	GNCWU00	AALJG00
M + 1	NGAAE00	GNCWM10	AALJ000
Dutch TTF			
Day-Ahead	GTFVX00	GTFWD00	GTFTX00
M + 1	GTFVM01	GTFWM10	GTFTM01

Platts UK Market Assessments

	p/th	\$/MMBtu	eur/MWh
UK NBP Market			
Within-Day	AAIG00	GNCMW00	AALJE00
DA Midday	GNCMV00	GNCMP00	GNCMT00
Day-Ahead	NGAAA00	GNCWU00	AALJG00
Weekend	AAAXS00	GNCW000	AALJ000
Working week+1	AAOGC00	GNCWP00	AAOGF00
Bal Month	NGAAC00	GNCWB00	AALJM00
M + 1	NGAAE00	GNCWM10	AALJ000
M + 2	NGAAG00	GNCWM20	AALJQ00
M + 3	NGAAI00	GNCWM30	AALJS00
M + 4	NGAAK00	GNCWM40	AALJU00

In addition to the annotated newsletters described above, a growing number of Platts realtime news/alert pages containing value values are being reformatted to include both the values and the underlying symbols. E.g. this is an example of the new format for page PGA0027 (Jet Kerosene International Assessments and Conversions):

27--Jet Kerosene International Assessments and Conversions - 06Jan14						
New York (Platts)--06Jan14/0850 am EST/ 1350 GMT						
			Caribbean Jet		Assessment	
USD/MT		Mid	Low	High	Date	Conv .

Caribbean Cargo	<PJAAD00>	985.940	985.91	985.97	03Jan14	/7.7
USD/MT		Europe Jet				
FOB ARA Barge	<PJABA00>	982.250	982.00	982.50	03Jan14	/7.89
FOB NWE Cargo	<PJAAV00>	974.250	974.00	974.50	03Jan14	/7.89
CIF NWE Cargo	<PJAAU00>	987.250	987.00	987.50	03Jan14	/7.89
FOB Med Cargo	<AAIDL00>	960.750	960.50	961.00	03Jan14	/7.89
USD/MT		Asia Jet				
India	<AAQWM00>	952.790			06Jan14	/7.9
South China	<PJABQ00>	978.000	976.00	980.00	06Jan14	/7.9
USD/Bbl		Asia Jet				
FOB S'pore Cargo	<PJABF00>	122.470	122.45	122.49	06Jan14	
MOPS Jet Strip	<AAPJZ00>	122.170	122.15	122.19	06Jan14	
Japan C&F Cargo	<PJABN00>	123.660	123.64	123.68	06Jan14	
Korea Cargo	<PJADG00>	122.420	122.40	122.44	06Jan14	
FOB Arab Gulf	<PJAAA00>	120.240	120.22	120.26	06Jan14	
LR2 FOB AG	<AAKNZ00>	120.640	120.62	120.66	06Jan14	
Australia	<AAFIY00>	127.230	127.21	127.25	06Jan14	
Cts/Gal		US Gulf Coast Jet				
Jet54 Water	<PJABM00>	291.760	291.71	291.81	03Jan14	*.42
Jet55 Water	<PJABN00>	299.260	299.21	299.31	03Jan14	*.42
ULS Kero Water	<AAVTK00>	305.760	305.71	305.81	03Jan14	*.42
Jet54 Pipe	<PJABO00>	290.510	290.46	290.56	03Jan14	*.42
Jet55 Pipe	<PJABP00>	298.010	297.96	298.06	03Jan14	*.42
ULS Kero Pipe	<AAVTL00>	304.510	304.46	304.56	03Jan14	*.42

7 Market Data history files

7.1 Market Data history files

In addition to Platts' subscription data services (Market Data via sFTP and the Platts website, and realtime data via many vendor partners), the Platts Custom Data group can assist with 1-time history requests for special projects, etc. Unless a special format is requested by the customer, Platts normally provides this history in one or the other of the formats described in the following two sections.

7.1.1 Market Data FTP history files

Market Data FTP history files have almost the same format as daily .ftp files. The major difference is that they do not have transaction indicators at the beginning of each line, since the files represent a 'snapshot' of the database at a fixed point in time, rather than update transactions during a specified time period.

History files consist of a 1-line header record containing a standard copyright notice, and separate lines for each value. Values are identified by a 7-character symbol, a bate code and an assessment date. Here is a sample of a history file for data category CS:

```
COPYRIGHT © 2016 by S&P Global Inc.  
AAKER03c 201510010000 1.782  
AAKER03h 201510010000 1.802  
AAKER03l 201510010000 1.762  
AAEQ03c 201510010000 58.769  
AAEQ03h 201510010000 58.789  
AAXNB00h 201510010000 436.645  
AAXNB00l 201510010000 436.347  
AAXNB00c 201510010000 436.496  
AAQUD00c 201510010000 66.23  
AAQUD00h 201510010000 66.25
```

There are three versions of Market Data FTP history files:

- One-year, which contain all values added or changed during the 365 days ending with the date the file was created. This file may include corrections made during that period to values dated before this year.
- Five-year, which contain all values for the 5 years ending December 31 of last year. These files are rebuilt once a year, in January.
- Full, which contain all values through December 31 of last year. These files are also rebuilt annually.

If you need history for an entire data category for more than the most recent 365 days, it will normally be delivered in two files, the first containing values through December 31 of last year, and the second containing values added or changed this year. Users should make sure to process the files in order, since a value published before January 1 of this year and then corrected this year will appear in both files.

Note that for custom data requests for history other than the 1-year, 5-year and full, data category level files described above, custom files in this format can be created for the exact symbols, data categories and date ranges required.

7.1.2 Market Data .csv history files

Market Data .csv history files provide history in a format similar to .csv-format daily files. The main difference is that there is no transaction indicator at the beginning of each line, since these files are ‘snapshots’ of the Platts database at a fixed point in time:

```

CS_hist.csv - Notepad
File Edit Format View Help
CS      FINAL      03/11/2016      03/11/2016 22:22      © 2016 by S&P Global Inc.
Trans   Symbol      Description      Currency      UOM      Date      Low(l)      High(h)
AACQI00 Gasoil .25%S (2500ppm) FOB Spore cargo vs Gasoil MOPS strip USD BBL 10/01/2015 58.6
AACUE00 Gasoil .25%S (2500ppm) FOB Spore cargo USD BBL 10/01/2015 58.59
AACZB00 Gasoline Unl 92 C+F Australia Cargo MAVg USD BBL 10/01/2015 69.46
AACZF00 Gasoline Unl 92 C+F Australia Cargo MAVg USD BBL 10/01/2015 69.44
AACZG00 Gasoline Unl 95 C+F Australia Cargo MAVg USD BBL 10/01/2015 67.77
AACZH00 Gasoline Unl 95 C+F Australia Cargo USD BBL 10/01/2015 72.15
AAFDB00 Jet Kero FOB Spore vs Jet Kero MOPS strip MAVg USD BBL 10/01/2015 -0.429
AAFDC00 Gasoil FOB Spore cargo vs Gasoil MOPS strip MAVg USD BBL 10/01/2015 -0.08
AAFEX00 Gasoil .05%S (500ppm) FOB Spore cargo vs Gasoil MOPS strip USD BBL 10/01/2015 59.08
AAFEB00 Gasoil .05%S (500ppm) FOB Spore cargo vs Gasoil MOPS strip USD BBL 10/01/2015 59.12
AAFY00 Jet kero C+F Australia Cargo USD BBL 10/01/2015 64.79
AAFZ00 Jet kero C+F Australia Cargo MAVg USD BBL 10/01/2015 63.987
AAGBZ00 MTBE FOB Spore MAVg USD MT 10/01/2015 620.477
AALPY00 Clean Demurrage FOB Spore USD MT 10/01/2015
AALPZ00 Clean Demurrage FOB Spore MAVg USD MT 10/01/2015
AALQA00 Dirty Demurrage FOB Spore USD MT 10/01/2015
    
```

As with daily Market Data .csv files, .csv history files are designed for direct use in desktop applications such as spreadsheets:

1	CS	FINAL	03/11/2016	03/11/2016 22:22	© 2016 by S&P Global Inc.									
2	Trans	Symbol	Description	Currency	UOM	Date	Low(l)	High(h)	Close(c)	Index(u)	Prev Vol(v)	Volume(v)	Bid(b)	Ask(a)
3		AACQI00	Gasoil .25%S	USD	BBL	10/01/2015	-0.78	-0.74	-0.76					
4		AACUE00	Gasoil .25%S	USD	BBL	10/01/2015	58.57	58.61	58.59					
5		AACZB00	Gasoline Unl	USD	BBL	10/01/2015	64.927	64.967	64.947					
6		AACZF00	Gasoline Unl	USD	BBL	10/01/2015	69.4	69.44	69.42					
7		AACZG00	Gasoline Unl	USD	BBL	10/01/2015	67.77	67.81	67.79					
8		AACZH00	Gasoline Unl	USD	BBL	10/01/2015	72.15	72.19	72.17					
9		AAFDB00	Jet Kero	FOB	USD	BBL	10/01/2015	-0.429	-0.389	-0.409				
10		AAFDC00	Gasoil	FOB	USD	BBL	10/01/2015	-0.08	-0.04	-0.06				
11		AAFEX00	Gasoil .05%S	USD	BBL	10/01/2015	59.08	59.12	59.1					

However, given the number of historical values in some data categories, these files can sometimes be very large, and may, for example, exceed the maximum number of rows allowed by some spreadsheet applications. Platts strongly recommends that users upgrade if necessary to a more current version of their spreadsheet application (e.g. Microsoft Excel 2007 or later) which supports spreadsheets with more than 64,000 rows, since many .csv-format value files exceed that size.

Like Market Data FTP history files, there are Full, 5-year and 1-year (most recent 365 days) versions of .csv history files - see section 7.1.2 for details. Custom files in this format can also be created to meet your particular needs regarding symbols, data categories and date ranges.

A Appendix A – bate, frequency, currency and unit of measure codes

The codes in the following tables will be found in both, Market Data FTP symbol files and .csv value, symbol and history files.

Note that while bate and frequency codes rarely change, currency and unit of measure codes may be adjusted more frequently. For updated lists of these codes, see the ‘Currencies’ and ‘Units of Measure’ tabs in the ‘directions’ link at: <https://www.spglobal.com/platts/en/our-methodology/symbol-page-directories>

H - HIGH VALUE	U - INDEX VALUE, OR UNSPECIFIED	A - ASKED VALUE
L - LOW VALUE	O - OPENING VALUE	B - BID VALUE
C - CLOSE OR MEAN VALUE	E - PREVIOUS-DAY OPEN INTEREST	
W - VOLUME	M - MEAN VALUE (RARELY USED)	

A.1 Bate codes

Code	Assessment Frequency	Code	Assessment Frequency
BI	EVERY OTHER MONTH	HR	HOURLY
BM	SEMI-MONTHLY	ID	INTRADAY
BY	SEMI-ANNUAL	MA	MONTHLY
BW	SEMI-WEEKLY	QR	QUARTERLY
DA	DAILY (7 DAY)	WA	WEEKLY
DW	DAILY (WEEKDAY)	YR	YEARLY

A.2 Assessment frequency codes

Code	Currency	Code	Currency
AED	UAE DIRHAM	KES	KENYAN SCHILLING
ANG	NETHERLANDS ANT. GUILDER	KMF	COMORO FRANC
ARA	ARGENTINIAN AUSTRAL	KRW	KOREAN WON
ARS	ARGENTINIAN PESO	KWD	KUWAITI DINAR
ATG	AUSTRIAN GROSCHEN	LKR	SRI LANKAN RUPEE
ATS	AUSTRIAN SCHILLING	LSL	LESOTHO LATI
AUC	AUSTRALIAN CENTS	LTL	LITHUANIAN LITAS
AUD	AUSTRALIAN DOLLAR	LUF	LUXEMBOURG FRANC
BDT	BANGLADESH TAKA	LVL	LATVIAN LATS
BEC	BELGIAN FRANC	MTL	MALTESE LIRA
BGN	BULGARIAN LEV	MWK	MALAWI KWACHA
BHD	BAHRAINI DINAR	MXN	MEXICAN PESO

A.3 Currency codes

Code	Currency	Code	Currency
BMD	BERMUDAN DOLLAR	MYR	MALAYSIAN RINGGIT
BOL	BOLIVIAN BOLIVIANO	N/A	NOT APPLICABLE
BRL	BRAZILIAN REAL	NGN	NIGERIAN NAIRA
CAC	CANADIAN CENTS	NLG	DUTCH GUILDER
CAD	CANADIAN DOLLAR	NOK	NORWEGIAN KRONE
CHF	SWISS FRANC	NZD	NEW ZEALAND DOLLAR
CLP	CHILEAN PESO	OMR	OMANI RIAL
CNY	CHINESE YUAN	PEN	PERU INTI
COP	COLUMBIAN PESO	PGK	PAPAU NEW GUINEA KINA
CYP	CYPRUS POUND (PRE-2008)	PHP	PHILLIPPINE PESO
CZK	CZECHOSLOVAKIA KORUNA	PKR	PAKASTANI RUPEE
DEM	GERMAN MARK	PLN	POLISH ZLOTY
DKK	DANISH KRONE	PTE	PORTUGUESE ESCUDO
DZD	ALGERIAN DINAR	QAR	QATARI RIAL
ECU	EUROPEAN CURRENCY UNIT	ROL	ROMANIAN LEU (PRE-JULY 05)
EEK	ESTONIAN KROON	RON	ROMANIAN LEI
EGP	EGYPTIAN POUND	RUB	RUSSIAN RUBLE
ERC	EURO CENTS	SAR	SAUDI RIAL
ESP	SPANISH PESETA	SEK	SWEDISH KRONE
EUR	EURO	SGD	SINGAPORE DOLLAR
FIM	FINNISH MARKKA	SHP	ST. HELENA POUND
FRF	FRENCH FRANC	SIT	SLOVENIAN TOLAR
GBC	BRITISH PENCE	SKK	SLOVAK KORUNA
GBP	GREAT BRITAIN POUND	SZL	SWAZILAND LILANGENI
GIP	GIBRALTAR POUND	THB	THAI BAHT
GPF	GERMAN PFENNIG	TND	TUNISIAN DINAR
GRD	GREEK DRACHMA	TRL	TURKISH LIRA (PRE-2005)
HKD	HONG KONG DOLLAR	TRY	TURKISH LIRA
HRK	CROATIAN KUNA	TWD	NEW TAIWAN DOLLAR
HUF	HUNGARIAN FORNIT	UKS	UK STERLING
IDR	INDONESIA RUPIAH	UNS	UNSPECIFIED
IEP	IRISH PUNT	USC	UNITED STATES CENTS
ILS	ISRAELI SHEKEL	USD	UNITED STATES DOLLAR
INR	INDIAN RUPEE	UST	US DOLLAR (THOUSANDS)
ISK	ICELAND KRONA	VEB	VENEZUELAN BOLIVAR
ITL	ITALIAN LIRA	XOF	CFA FRANC BCEAO
JMD	JAMAICAN DOLLAR	ZAR	SOUTH AFRICAN RAND
JOD	JORDANIAN DINAR	ZWD	ZIMBABWEAN DOLLAR
JPY	JAPANESE YEN		

A.4 Unit of measure codes

Code	Unit of Measure	Code	Unit of Measure
ALW	ALLOWANCE (EMISSIONS)	MBB	BARRELS (MILLIONS)
BBD	BARRELS/DAY	MBD	BARRELS/DAY (MILLIONS)
BBL	BARREL	MCM	CUBIC METERS (MILLIONS)
BCF	CUBIC FEET (BILLIONS)	MEG	MEGAWATT
BKH	BTU/KILOWATT HOUR	MGW	MEGAWATT HOURS
BSL	BUSHEL	MIL	MILLIMETER
CEL	CELSIUS	MMB	BTU (MILLIONS)
CM	CUBIC METER	MMT	METRIC TONS (MILLIONS)
CMT	CUBIC METERS (THOUSAND)	MPH	MPH
CON	CONTRACTS (NO OF)	MT	METRIC TON
CWT	HUNDREDWEIGHT	MTU	THIRD UNKNOWN
DMT	DRY METRIC TON	MTZ	TROY OZ (MILLIONS)
FAR	FARENHEIT	N/A	NOT APPLICABLE
FL	FLASK	NOD	DAYS (NO OF)
GAL	GALLON	NOV	VESSELS (NO OF)
GIG	GIGAJOULES	PCT	PERCENTAGE
GRT	GROSS TONS	RNC	RINS CREDIT
GWH	GIGAWATT HOURS	ST	SHORT TON
IBP	INDX VS BS PD=100	SWU	SEPARATIVE WORK UNIT
INC	INCHES	TAF	THOUSAND OF ACRE FEET
KG	KILOGRAM	TBB	BARRELS (THOUSANDS)
KLT	KILOLITER	TBD	BARRELS/DAY (THOUSANDS)
KNT	KNOTS	THR	THERM
KPB	KILOWATTS/BTU	THT	TONS (THOUSANDS)
KT	KILOTON	TJL	TERAJOULES
KWH	KILOWATT HOURS	TMT	METRIC TON (THOUSANDS)
LB	POUND	TON	TON
LGT	LONG TON	TOZ	TROY OUNCE
LSM	LUMPSUM	UNS	UNSPECIFIED

B Appendix B – M2M Market Data categories

B.1 Introduction

Platts provides additional descriptive information in Market Data .csv files for the data categories containing Platts Editorial spot and forward assessments for North American power and natural gas, as well as those which make up the Platts M2MS (Mark to Market) service.

The Market Data .csv format described below applies to the following market data categories:

MDC Code	MDC Description
MDC	M2MS: 120-month Gas forward curves MidContinent
EDC	M2MS: 120-month Gas forward curves North East
PDC	M2MS: 120-month Gas forward curves PFC Hubs Only
RDC	M2MS: 120-month Gas forward curves Rockies and West
UDC	M2MS: 120-month Gas forward curves Upper Midwest
GDC	M2MS: 120-month Gas forward curves US Gulf Coast
ODC	M2MS: 120-month Power forward curves ERCOT
ADC	M2MS: 120-month Power forward curves North East
FDC	M2MS: 120-month Power forward curves PFC Power Hubs Only
JDC	M2MS: 120-month Power forward curves PJM/MISO
SDC	M2MS: 120-month Power forward curves South East
WDC	M2MS: 120-month Power forward curves West
MMC	M2MS: 240-month Gas forward curves Mid Continent
EMC	M2MS: 240-month Gas forward curves North East
PMC	M2MS: 240-month Gas forward curves PFC Hubs Only
RMC	M2MS: 240-month Gas forward curves Rockies and West
UMC	M2MS: 240-month Gas forward curves Upper Midwest
GMC	M2MS: 240-month Gas forward curves US Gulf Coast
OMC	M2MS: 240-month Power forward curves ERCOT
AMC	M2MS: 240-month Power forward curves North East
FMC	M2MS: 240-month Power forward curves PFC Power Hubs Only
JMC	M2MS: 240-month Power forward curves PJM/MISO
SMC	M2MS: 240-month Power forward curves South East
WMC	M2MS: 240-month Power forward curves West

Platts[®]

S&P Global
Commodity Insights

For more information, please contact:

Web: www.spglobal.com/commodityinsights/en

E-mail: ci.support@spglobal.com

NORTH AMERICA
+1-800-PLATTS8 (toll-free)
+1-212-904-3070 (direct)

EMEA
+44-(0)20-7176-6111

LATIN AMERICA
+54-11-4121-4810

ASIA-PACIFIC
+65-6532-2800