

Platts eWindow

Market Overview Americas

Market	Products	Description
US Crude FOB USGC	Cargoes	WTI, WTL, Bakken and Eagle Ford crude loading at ports on the US Gulf Coast.
USGC Gasoline & Distillate	Pipeline	Gasoline and distillate grades moving on Colonial Pipeline with basis Pasadena, Texas.
USGC Gasoline & Distillate	Barges	Gasoline and distillate barges loading out of Beaumont/Port Arthur and Lake Charles, in addition to the greater Houston Area.
USAC Gasoline & Distillate	Pipeline	Gasoline and distillate grades loading into the Buckeye Pipeline at Linden, New Jersey.
USAC Gasoline & Distillate	Barges	Gasoline and distillate grades FOB basis New York Harbor.
Linden Gasoline & Distillate	Pipeline	Gasoline and distillate grades moving on Colonial Pipeline basis Linden, New Jersey with offtake along Line 3.
Group 3 Gasoline & Distillate	Pipeline	Gasoline and distillate grades moving on the Magellan Pipeline, basis FOB Tulsa, Oklahoma.
Chicago Gasoline & Distillate	Pipeline	Gasoline and distillate grades at the Buckeye Complex storage hub and delivered into Chicago Badger, West Shore and Wolverine pipelines.
Colonial Pipeline Space	Pipeline	Instruments are the spread between the two legs of a bilateral transaction on Colonial Pipelines Lines 1, 2, and 3. Shipments are accepted for gasoline (Line 1) and distillate grades (Line 2).
Export ULSD Cargoes	Cargoes	Reflects EN590 quality diesel with loading locations that include terminals along the US Gulf Coast from Corpus Christi, Texas to Pascagoula, Mississippi.
Ethanol	Barges	Ethanol Basis FOB Houston, Chicago Argo, and New York Harbor.
Ethanol	Rail	Ethanol Basis Chicago Argo, Chicago Rule 11.
USGC Fuel Oil	Barges	Fuel oil grades loading FOB Houston, FOB Galveston Bay, and FOB New Orleans.
USGC Fuel Oil	Derivatives	Futures are for the immediate forward month and the next six forward months. Swaps include balmo, M1, M2, M3, M4, M5, M6, and Q1, Q2, Q3, Q4.
USGC 0.5% Marine Fuel	Barges	Marine Fuel 0.5% loading FOB Houston, FOB Galveston Bay and FOB New Orleans.
USAC Fuel Oil	Barges	Fuel oil grades delivered basis New York Harbor. Bids, offers and transactions that reflect delivery to locations beyond New York Harbor, i.e. Boston-Maryland range, will be normalized by using prevailing freight rates as published by Platts.
USAC Fuel Oil	Derivatives	Futures are for the immediate forward month and the next six forward months. Swaps include balmo, M1, M2, M3, M4, M5, M6, and Q1, Q2, Q3, Q4.
USAC 0.5% Marine Fuel	Barges	Marine Fuel 0.5% delivered basis New York Harbor. Bids, offers and transactions that reflect delivery to locations beyond New York Harbor, i.e., Boston-Maryland range, will be normalized by using prevailing freight rates as published by Platts.
LPG	Pipeline	Includes C2, C3, C4, IC4, and C5 grade hydrocarbons.
RINs	Physical	Renewable Identification Numbers for D6 Conventional for transfer by a specified date.
Platts Distillates Jet LA/LAX	Pipeline	Jet fuel moving on Kinder Morgan Pipeline System, with an option to deliver at Los Angeles International Airport (LAX). LAX-only option also exists.
Platts MTBE US	Barges	MTBE on FOB basis loaded in the Houston/Texas City area with specifications of MTBE minimum of 95%, water max of 1,500 ppm and a methanol max of 5,000 ppm.

Market	Products	Description
Americas Bunkers	Barges, Tanks	IFO 380 CST bunker fuel on ex-wharf and delivered basis in Charleston, Houston, Los Angeles, New Orleans, New York, Philadelphia, and ex-wharf basis only in Savannah and Balboa, Panama. MGO 0.1% bunker fuel on ex-wharf and delivered basis in Charleston, Houston, New Orleans, New York, Philadelphia and ex-wharf basis only in Savannah.
Americas Naphtha	Barges	Standard and Heavy Naphtha pricing flat or vs WB, delivered at port in USGC.

Gain greater speed and transparency in the assessment process

Platts eWindow is a data-entry and online communications tool that gives you a transparent, at-a-glance view of price discovery in the physical spot and derivatives markets.

Delivering greater speed and efficiency to the price assessment process for crude, as well as refined products and biofuels, Platts eWindow is used by more than 2,000 market participants from more than 460 companies, reaching 40 markets worldwide since its introduction in 2007.

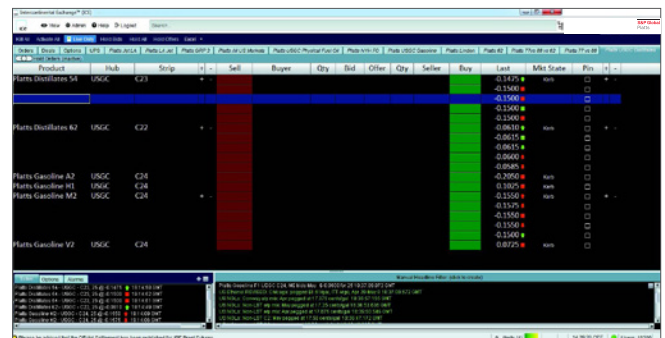
Platts eWindow facilitates the price assessment process by combining the Platts Market-On-Close (MOC) price assessment methodology with state-of-the-art technology, customized for Platts and licensed from the Intercontinental Exchange (ICE).

Benefits

- Clarity and transparency**
 In real time, view all firm bids, offers and transaction data communicated to Platts editors during the MOC process. Access an online community of more than 1,300 users worldwide
- Efficiency and data management**
 Directly manage orders, make price changes, indicate trading requirements and confirm deal information simultaneously to Platts and the marketplace
- Trade confirmation and data logging**
 Execute trades through the ICE system interface without leaving the Platts MOC environment. Back offices instantly receive and process trade confirmations

- Counterparty clarity and credit management**
 Better assess counterparty appropriateness through Platts eWindow's transparent environment, as well as ICE's integrated credit control system—including ICE Clear—for both physical and derivative trades

Why use the limited functionality of instant messaging, telephone and e-mail when you can reach Platts editors and the marketplace online through Platts eWindow?



Trading window, ticker and headlines.

For more information, please visit us online or speak to one of our sales specialists:

spglobal.com/platts
 ewindow@spglobal.com

North America
 +1-713-655-2222

EMEA
 +44-(0)20-7176-6111

Asia-Pacific
 +65-6530-6530